

Datasheet for ABIN630559
anti-IFRD1 antibody (N-Term)



[Go to Product page](#)

1 Image

Overview

Quantity:	100 µL
Target:	IFRD1
Binding Specificity:	N-Term
Reactivity:	Human, Mouse, Rat
Host:	Rabbit
Clonality:	Polyclonal
Conjugate:	This IFRD1 antibody is un-conjugated
Application:	Western Blotting (WB)

Product Details

Immunogen:	IFRD1 antibody was raised using the N terminal of IFRD1 corresponding to a region with amino acids VQPFSDDEDASIETMSHCSGYSDPSSFAEDGPEVLDEEGTQEDLEYKLGKGL
Specificity:	IFRD1 antibody was raised against the N terminal of IFRD1
Purification:	Affinity purified

Target Details

Target:	IFRD1
Alternative Name:	IFRD1 (IFRD1 Products)
Background:	IFRD1 belongs to the IFRD family. It could play a role in regulating gene activity in the proliferative and/or differentiative pathways induced by NGF. IFRD1 may be an autocrine factor that attenuates or amplifies the initial ligand-induced signal.

Target Details

Molecular Weight: 50 kDa (MW of target protein)

Application Details

Application Notes: WB: 1 µg/mL
Optimal conditions should be determined by the investigator.

Comment: IFRD1 Blocking Peptide, catalog no. 33R-9754, is also available for use as a blocking control in assays to test for specificity of this IFRD1 antibody

Restrictions: For Research Use only

Handling

Format: Lyophilized

Reconstitution: Lyophilized powder. Add distilled water for a 1 mg/mL concentration of IFRD1 antibody in PBS

Concentration: Lot specific

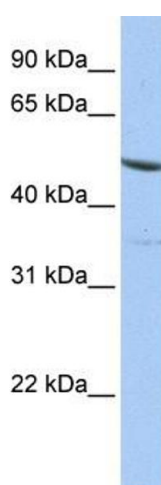
Buffer: PBS

Handling Advice: Avoid repeated freeze/thaw cycles.
Dilute only prior to immediate use.

Storage: 4 °C/-20 °C

Storage Comment: Store at 2-8 °C for short periods. For longer periods of storage, store at -20 °C.

Images



Western Blotting

Image 1. IFRD1 antibody used at 1 ug/ml to detect target protein.