

Datasheet for ABIN630570
anti-DONSON antibody (Middle Region)



[Go to Product page](#)

1 Image

Overview

Quantity:	100 µL
Target:	DONSON
Binding Specificity:	Middle Region
Reactivity:	Human, Mouse
Host:	Rabbit
Clonality:	Polyclonal
Conjugate:	This DONSON antibody is un-conjugated
Application:	Western Blotting (WB)

Product Details

Immunogen:	DONSON antibody was raised using the middle region of DONSON corresponding to a region with amino acids DLITALISPTTRGLREAMRNEGIEFSLPLIKESGHKKETASGTS LGYGEE
Specificity:	DONSON antibody was raised against the middle region of DONSON
Purification:	Affinity purified

Target Details

Target:	DONSON
Alternative Name:	DONSON (DONSON Products)
Background:	This gene lies downstream of the SON gene and spans 10 kb on chromosome 21. The function of this gene is unknown.

Target Details

Molecular Weight: 63 kDa (MW of target protein)

Application Details

Application Notes: WB: 1 µg/mL
Optimal conditions should be determined by the investigator.

Comment: DONSON Blocking Peptide, catalog no. 33R-2048, is also available for use as a blocking control in assays to test for specificity of this DONSON antibody

Restrictions: For Research Use only

Handling

Format: Lyophilized

Reconstitution: Lyophilized powder. Add distilled water for a 1 mg/mL concentration of DONSON antibody in PBS

Concentration: Lot specific

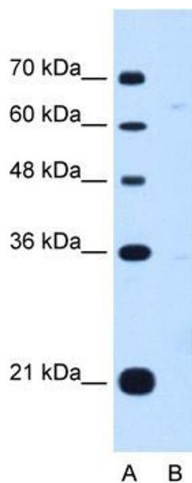
Buffer: PBS

Handling Advice: Avoid repeated freeze/thaw cycles.
Dilute only prior to immediate use.

Storage: 4 °C/-20 °C

Storage Comment: Store at 2-8 °C for short periods. For longer periods of storage, store at -20 °C.

Images



Western Blotting

Image 1. DONSON antibody used at 1 µg/ml to detect target protein.