

Datasheet for ABIN630586

anti-PPP1CA antibody (N-Term)[Go to Product page](#)**1** Image

Overview

Quantity:	100 µL
Target:	PPP1CA
Binding Specificity:	N-Term
Reactivity:	Human, Mouse, Rat, Dog
Host:	Rabbit
Clonality:	Polyclonal
Conjugate:	This PPP1CA antibody is un-conjugated
Application:	Western Blotting (WB)

Product Details

Immunogen:	PPP1 CA antibody was raised using the N terminal of PPP1 A corresponding to a region with amino acids MSDSEKLNLDISIIGRLLEGSRVLTTPHCAPVQGSRPGKNVQLTENEIRGLC
Specificity:	PPP1 CA antibody was raised against the N terminal of PPP1 A
Purification:	Affinity purified

Target Details

Target:	PPP1CA
Alternative Name:	PPP1CA (PPP1CA Products)
Background:	PPP1CA is one of the three catalytic subunits of protein phosphatase 1 (PP1). PP1 is a serine/threonine specific protein phosphatase known to be involved in the regulation of a variety of cellular processes, such as cell division, glycogen metabolism, muscle contractility,

Target Details

protein synthesis, and HIV-1 viral transcription. Increased PP1 activity has been observed in the end stage of heart failure. Studies in both human and mice suggest that PP1 is an important regulator of cardiac function. Mouse studies also suggest that PP1 functions as a suppressor of learning and memory.

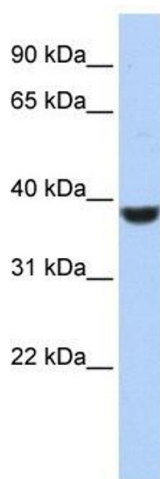
Molecular Weight:	38 kDa (MW of target protein)
Pathways:	M Phase , Cellular Glucan Metabolic Process , Regulation of Carbohydrate Metabolic Process , Lipid Metabolism

Application Details

Application Notes:	WB: 1 µg/mL Optimal conditions should be determined by the investigator.
Comment:	PPP1CA Blocking Peptide, catalog no. 33R-6411, is also available for use as a blocking control in assays to test for specificity of this PPP1CA antibody
Restrictions:	For Research Use only

Handling

Format:	Lyophilized
Reconstitution:	Lyophilized powder. Add distilled water for a 1 mg/mL concentration of PPP0 A antibody in PBS
Concentration:	Lot specific
Buffer:	PBS
Handling Advice:	Avoid repeated freeze/thaw cycles. Dilute only prior to immediate use.
Storage:	4 °C/-20 °C
Storage Comment:	Store at 2-8 °C for short periods. For longer periods of storage, store at -20 °C.



Western Blotting

Image 1. PPP1CA antibody used at 1 ug/ml to detect target protein.