

Datasheet for ABIN630593  
**anti-GTPBP10 antibody**



[Go to Product page](#)

1 Image

## Overview

Quantity:	100 µL
Target:	GTPBP10
Reactivity:	Human, Mouse, Rat, Drosophila melanogaster
Host:	Rabbit
Clonality:	Polyclonal
Conjugate:	This GTPBP10 antibody is un-conjugated
Application:	Western Blotting (WB)

## Product Details

Immunogen:	GTPBP10 antibody was raised using a synthetic peptide corresponding to a region with amino acids DLKLIADVGLVGFNAGKSSLLSCVSHAKPAIADYAFTTLKPELGKIMYS
Purification:	Affinity purified

## Target Details

Target:	GTPBP10
Alternative Name:	GTPBP10 ( <a href="#">GTPBP10 Products</a> )
Background:	Small G proteins, such as GTPBP10, act as molecular switches that play crucial roles in the regulation of fundamental cellular processes such as protein synthesis, nuclear transport, membrane trafficking, and signal transduction.
Molecular Weight:	43 kDa (MW of target protein)

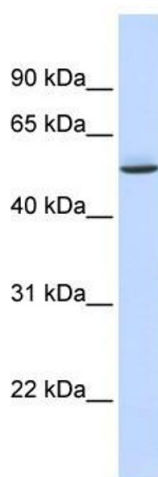
## Application Details

Application Notes:	WB: 1 µg/mL Optimal conditions should be determined by the investigator.
Comment:	GTPBP10 Blocking Peptide, catalog no. 33R-2052, is also available for use as a blocking control in assays to test for specificity of this GTPBP10 antibody
Restrictions:	For Research Use only

## Handling

Format:	Lyophilized
Reconstitution:	Lyophilized powder. Add distilled water for a 1 mg/mL concentration of GTPBP10 antibody in PBS
Concentration:	Lot specific
Buffer:	PBS
Handling Advice:	Avoid repeated freeze/thaw cycles.
Storage:	4 °C/-20 °C
Storage Comment:	Store at 2-8 °C for short periods. For longer periods of storage, store at -20 °C.

## Images



### Western Blotting

**Image 1.** GTPBP10 antibody used at 1 ug/ml to detect target protein.