

Datasheet for ABIN630602  
**anti-CRYBA1 antibody (N-Term)**



[Go to Product page](#)

1 Image

## Overview

Quantity:	100 µL
Target:	CRYBA1
Binding Specificity:	N-Term
Reactivity:	Human, Mouse, Rat
Host:	Rabbit
Clonality:	Polyclonal
Conjugate:	This CRYBA1 antibody is un-conjugated
Application:	Western Blotting (WB)

## Product Details

Immunogen:	Crystallin Beta A1 antibody was raised using the N terminal of CRYBA1 corresponding to a region with amino acids METQAEQQELETLPPTTKMAQTNPTPGSLGPWKITIYDQENFQGKRMEFTS
Specificity:	Crystallin Beta A1 antibody was raised against the N terminal of CRYBA1
Purification:	Affinity purified

## Target Details

Target:	CRYBA1
Alternative Name:	Crystallin beta A1 ( <a href="#">CRYBA1 Products</a> )
Background:	Crystallins are separated into two classes: taxon-specific, or enzyme, and ubiquitous. The latter class constitutes the major proteins of vertebrate eye lens and maintains the transparency and

## Target Details

---

refractive index of the lens. Since lens central fiber cells lose their nuclei during development, these crystallins are made and then retained throughout life, making them extremely stable proteins. Mammalian lens crystallins are divided into alpha, beta, and gamma families, Beta-crystallins form aggregates of different sizes and are able to self-associate to form dimers or to form heterodimers with other beta-crystallins.

---

Molecular Weight: 25 kDa (MW of target protein)

## Application Details

---

Application Notes: WB: 1 µg/mL  
Optimal conditions should be determined by the investigator.

---

Comment: Crystallin Beta A1 Blocking Peptide, catalog no. 33R-5973, is also available for use as a blocking control in assays to test for specificity of this Crystallin Beta A1 antibody

---

Restrictions: For Research Use only

## Handling

---

Format: Lyophilized

---

Reconstitution: Lyophilized powder. Add distilled water for a 1 mg/mL concentration of CRYBA1 antibody in PBS

---

Concentration: Lot specific

---

Buffer: PBS

---

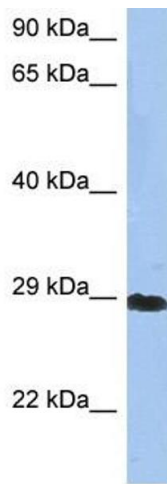
Handling Advice: Avoid repeated freeze/thaw cycles.  
Dilute only prior to immediate use.

---

Storage: 4 °C/-20 °C

---

Storage Comment: Store at 2-8 °C for short periods. For longer periods of storage, store at -20 °C.



### Western Blotting

**Image 1.** Crystallin Beta A1 antibody used at 1 ug/ml to detect target protein.