

Datasheet for ABIN630605 **anti-CMAS antibody (N-Term)**



[Go to Product page](#)

1 Image

Overview

Quantity:	100 µL
Target:	CMAS
Binding Specificity:	N-Term
Reactivity:	Human, Mouse, Rat
Host:	Rabbit
Clonality:	Polyclonal
Conjugate:	This CMAS antibody is un-conjugated
Application:	Western Blotting (WB)

Product Details

Immunogen:	CMAS antibody was raised using the N terminal of CMAS corresponding to a region with amino acids GRGVEKPPHLAALILARGGSKGIPLKNIKHLAGVPLIGWVLRALDSGAF
Specificity:	CMAS antibody was raised against the N terminal of CMAS
Purification:	Affinity purified

Target Details

Target:	CMAS
Alternative Name:	CMAS (CMAS Products)
Background:	CMAS is an enzyme that catalyzes the activation of Neu5Ac to Cytidine 5-prime-monophosphate N-acetylneuraminic acid (CMP-Neu5Ac), which provides the substrate required for the addition of sialic acid. Sialic acids of cell surface glycoproteins and glycolipids play a

Target Details

pivotal role in the structure and function of animal tissues. The pattern of cell surface sialylation is highly regulated during embryonic development, and changes with stages of differentiation. Studies of a similar murine protein suggest that this protein localizes to the nucleus.

Molecular Weight: 48 kDa (MW of target protein)

Application Details

Application Notes: WB: 1 µg/mL
Optimal conditions should be determined by the investigator.

Comment: CMAS Blocking Peptide, catalog no. 33R-3531, is also available for use as a blocking control in assays to test for specificity of this CMAS antibody

Restrictions: For Research Use only

Handling

Format: Lyophilized

Reconstitution: Lyophilized powder. Add distilled water for a 1 mg/mL concentration of CMAS antibody in PBS

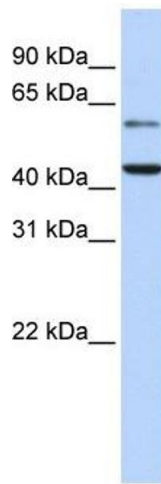
Concentration: Lot specific

Buffer: PBS

Handling Advice: Avoid repeated freeze/thaw cycles.
Dilute only prior to immediate use.

Storage: 4 °C/-20 °C

Storage Comment: Store at 2-8 °C for short periods. For longer periods of storage, store at -20 °C.



Western Blotting

Image 1. CMAS antibody used at 1 ug/ml to detect target protein.