

## Datasheet for ABIN630621 **anti-CAD antibody (N-Term)**



[Go to Product page](#)

### 1 Image

#### Overview

Quantity:	100 µL
Target:	CAD
Binding Specificity:	N-Term
Reactivity:	Human, Mouse, Rat
Host:	Rabbit
Clonality:	Polyclonal
Conjugate:	This CAD antibody is un-conjugated
Application:	Western Blotting (WB)

#### Product Details

Immunogen:	CAD antibody was raised using the N terminal of CAD corresponding to a region with amino acids AALVLEDGSVLRGQPFGAAVSTAGEVVFQTMVGYPEALTDPSYKAQILV
Specificity:	CAD antibody was raised against the N terminal of CAD
Purification:	Affinity purified

#### Target Details

Target:	CAD
Alternative Name:	CAD ( <a href="#">CAD Products</a> )
Background:	CAD is a trifunctional protein which is associated with the enzymatic activities of the first 3 enzymes in the 6-step pathway of pyrimidine biosynthesis: carbamoylphosphate synthetase (CPS II), aspartate transcarbamoylase, and dihydroorotase. This protein is regulated by the

## Target Details

---

mitogen-activated protein kinase (MAPK) cascade, which indicates a direct link between activation of the MAPK cascade and de novo biosynthesis of pyrimidine nucleotides.

Molecular Weight: 243 kDa (MW of target protein)

Pathways: [Production of Molecular Mediator of Immune Response, Ribonucleoside Biosynthetic Process](#)

## Application Details

---

Application Notes: WB: 1 µg/mL  
Optimal conditions should be determined by the investigator.

Comment: CAD Blocking Peptide, catalog no. 33R-1037, is also available for use as a blocking control in assays to test for specificity of this CAD antibody

Restrictions: For Research Use only

## Handling

---

Format: Lyophilized

Reconstitution: Lyophilized powder. Add distilled water for a 1 mg/mL concentration of CAD antibody in PBS

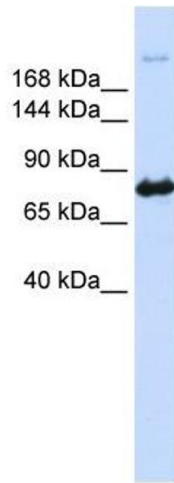
Concentration: Lot specific

Buffer: PBS

Handling Advice: Avoid repeated freeze/thaw cycles.  
Dilute only prior to immediate use.

Storage: 4 °C/-20 °C

Storage Comment: Store at 2-8 °C for short periods. For longer periods of storage, store at -20 °C.



### Western Blotting

**Image 1.** CAD antibody used at 1 ug/ml to detect target protein.