

Datasheet for ABIN630623 **anti-PNMA3 antibody (N-Term)**



[Go to Product page](#)

1 Image

Overview

Quantity:	100 µL
Target:	PNMA3
Binding Specificity:	N-Term
Reactivity:	Human
Host:	Rabbit
Clonality:	Polyclonal
Conjugate:	This PNMA3 antibody is un-conjugated
Application:	Western Blotting (WB)

Product Details

Immunogen:	PNMA3 antibody was raised using the N terminal of PNMA3 corresponding to a region with amino acids QDIDYALLPREIPGKGGPWEVIVKPRNSDGEFLNRLNRFLEEERRTVSDM
Specificity:	PNMA3 antibody was raised against the N terminal of PNMA3
Purification:	Affinity purified

Target Details

Target:	PNMA3
Alternative Name:	PNMA3 (PNMA3 Products)
Background:	This gene is a member of the paraneoplastic antigen MA (PNMA) gene family, whose protein products share homology with retroviral Gag proteins. They are highly expressed in the brain and also in a range of tumors associated with serious neurological phenotypes.

Target Details

PMID:16407312 reports the presence of a functional -1 ribosomal frameshift signal (consisting of a heptanucleotide shift motif followed 3' by a pseudoknot structure) in this gene, however, the frame-shifted product has not been characterized.

Molecular Weight: 52 kDa (MW of target protein)

Application Details

Application Notes: WB: 1 µg/mL
Optimal conditions should be determined by the investigator.

Comment: PNMA3 Blocking Peptide, catalog no. 33R-7501, is also available for use as a blocking control in assays to test for specificity of this PNMA3 antibody

Restrictions: For Research Use only

Handling

Format: Lyophilized

Reconstitution: Lyophilized powder. Add distilled water for a 1 mg/mL concentration of PNMA3 antibody in PBS

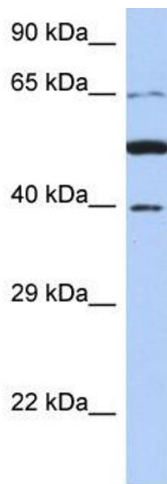
Concentration: Lot specific

Buffer: PBS

Handling Advice: Avoid repeated freeze/thaw cycles.
Dilute only prior to immediate use.

Storage: 4 °C/-20 °C

Storage Comment: Store at 2-8 °C for short periods. For longer periods of storage, store at -20 °C.



Western Blotting

Image 1. PNMA3 antibody used at 1 ug/ml to detect target protein.