

Datasheet for ABIN630624  
**anti-RALGPS2 antibody (C-Term)**



[Go to Product page](#)

1 Image

## Overview

Quantity:	100 µL
Target:	RALGPS2
Binding Specificity:	C-Term
Reactivity:	Human, Mouse, Rat
Host:	Rabbit
Clonality:	Polyclonal
Conjugate:	This RALGPS2 antibody is un-conjugated
Application:	Western Blotting (WB)

## Product Details

Immunogen:	RALGPS2 antibody was raised using the C terminal of RALGPS2 corresponding to a region with amino acids YLGIYLSDLTYIDSAYPSTGSILENEQRSNLMNNILRIISDLQQSCEYDI
Specificity:	RALGPS2 antibody was raised against the C terminal of RALGPS2
Purification:	Affinity purified

## Target Details

Target:	RALGPS2
Alternative Name:	RALGPS2 ( <a href="#">RALGPS2 Products</a> )
Background:	RALGPS2 is a guanine nucleotide exchange factor for the small GTPase RALA. RALGPS2 may be involved in cytoskeletal organization. RALGPS2 may also be involved in the stimulation of transcription in a Ras-independent fashion.

## Target Details

---

Molecular Weight: 32 kDa (MW of target protein)

## Application Details

---

Application Notes: WB: 1 µg/mL  
Optimal conditions should be determined by the investigator.

Comment: RALGPS2 Blocking Peptide, catalog no. 33R-10169, is also available for use as a blocking control in assays to test for specificity of this RALGPS2 antibody

Restrictions: For Research Use only

## Handling

---

Format: Lyophilized

Reconstitution: Lyophilized powder. Add distilled water for a 1 mg/mL concentration of RALGPS2 antibody in PBS

Concentration: Lot specific

Buffer: PBS

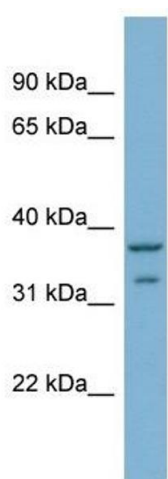
Handling Advice: Avoid repeated freeze/thaw cycles.  
Dilute only prior to immediate use.

Storage: 4 °C/-20 °C

Storage Comment: Store at 2-8 °C for short periods. For longer periods of storage, store at -20 °C.

## Images

---



### Western Blotting

**Image 1.** RALGPS2 antibody used at 1 ug/ml to detect target protein.