

Datasheet for ABIN630626 **anti-SMC2 antibody (N-Term)**



[Go to Product page](#)

1 Image

Overview

Quantity:	100 µL
Target:	SMC2
Binding Specificity:	N-Term
Reactivity:	Human, Rat, Mouse
Host:	Rabbit
Clonality:	Polyclonal
Conjugate:	This SMC2 antibody is un-conjugated
Application:	Western Blotting (WB)

Product Details

Immunogen:	SMC2 antibody was raised using the N terminal of SMC2 corresponding to a region with amino acids ISNLSQVRASNLDLVYKNGQAGITKASVSITFDNSDKKQSPGLGFEVHDE
Specificity:	SMC2 antibody was raised against the N terminal of SMC2
Purification:	Affinity purified

Target Details

Target:	SMC2
Alternative Name:	SMC2 (SMC2 Products)
Background:	SMC2 is the central component of the condensin complex, a complex required for conversion of interphase chromatin into mitotic-like condense chromosomes. The condensin complex probably introduces positive supercoils into relaxed DNA in the presence of type I

Target Details

topoisomerases and converts nicked DNA into positive knotted forms in the presence of type II topoisomerases.

Molecular Weight: 32 kDa (MW of target protein)

Application Details

Application Notes: WB: 1 µg/mL
Optimal conditions should be determined by the investigator.

Comment: SMC2 Blocking Peptide, catalog no. 33R-4161, is also available for use as a blocking control in assays to test for specificity of this SMC2 antibody

Restrictions: For Research Use only

Handling

Format: Lyophilized

Reconstitution: Lyophilized powder. Add distilled water for a 1 mg/mL concentration of SMC2 antibody in PBS

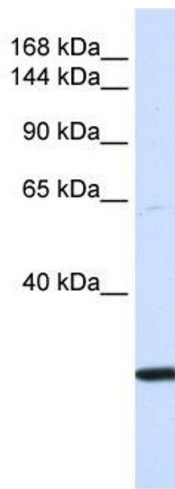
Concentration: Lot specific

Buffer: PBS

Handling Advice: Avoid repeated freeze/thaw cycles.
Dilute only prior to immediate use.

Storage: 4 °C/-20 °C

Storage Comment: Store at 2-8 °C for short periods. For longer periods of storage, store at -20 °C.



Western Blotting

Image 1. SMC2 antibody used at 1 ug/ml to detect target protein.