

Datasheet for ABIN630629
anti-VASH1 antibody (N-Term)



[Go to Product page](#)

1 Image

Overview

Quantity:	100 µL
Target:	VASH1
Binding Specificity:	N-Term
Reactivity:	Human, Mouse, Rat
Host:	Rabbit
Clonality:	Polyclonal
Conjugate:	This VASH1 antibody is un-conjugated
Application:	Western Blotting (WB)

Product Details

Immunogen:	Vasohibin 1 antibody was raised using the N terminal of VASH1 corresponding to a region with amino acids ATWERMWKHVAKIHPDGEKVAQRIRGATDLPKIPISVPTFQPSTPVPER
Specificity:	Vasohibin 1 antibody was raised against the N terminal of VASH1
Purification:	Affinity purified

Target Details

Target:	VASH1
Alternative Name:	Vasohibin 1 (VASH1 Products)
Background:	VASH1 is the angiogenesis inhibitor. It inhibits migration, proliferation and network formation by endothelial cells as well as angiogenesis. This inhibitory effect is selective to endothelial cells as it does not affect the migration of smooth muscle cells or fibroblasts. VASH1 does not

Target Details

affect the proliferation of cancer cells in vitro, but inhibits tumor growth and tumor angiogenesis. It acts in an autocrine manner. VASH1 inhibits artery neointimal formation and macrophage infiltration.

Molecular Weight: 41 kDa (MW of target protein)

Application Details

Application Notes: WB: 1 µg/mL
Optimal conditions should be determined by the investigator.

Comment: Vasohibin 1 Blocking Peptide, catalog no. 33R-1576, is also available for use as a blocking control in assays to test for specificity of this Vasohibin 1 antibody

Restrictions: For Research Use only

Handling

Format: Lyophilized

Reconstitution: Lyophilized powder. Add distilled water for a 1 mg/mL concentration of VASH1 antibody in PBS

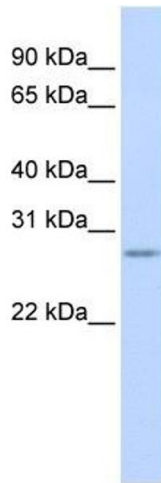
Concentration: Lot specific

Buffer: PBS

Handling Advice: Avoid repeated freeze/thaw cycles.
Dilute only prior to immediate use.

Storage: 4 °C/-20 °C

Storage Comment: Store at 2-8 °C for short periods. For longer periods of storage, store at -20 °C.



Western Blotting

Image 1. Vasohibin 1 antibody used at 1 ug/ml to detect target protein.