

Datasheet for ABIN630632
anti-IFFO1 antibody (N-Term)



[Go to Product page](#)

1 Image

Overview

Quantity:	100 µL
Target:	IFFO1
Binding Specificity:	N-Term
Reactivity:	Human
Host:	Rabbit
Clonality:	Polyclonal
Conjugate:	This IFFO1 antibody is un-conjugated
Application:	Western Blotting (WB)

Product Details

Immunogen:	HOM-TES-103 antibody was raised using the N terminal Of Hom-Tes-103 corresponding to a region with amino acids MGRKRERKAAVEEDTSLSESEGPRQPDGDEEESTALSINEEMQRMLNQL
Specificity:	HOM-TES-103 antibody was raised against the N terminal Of Hom-Tes-103
Purification:	Affinity purified

Target Details

Target:	IFFO1
Alternative Name:	HOM-TES-103 (IFFO1 Products)
Background:	This gene is a member of the intermediate filament family. Intermediate filaments are proteins which are primordial components of the cytoskeleton and nuclear envelope.

Target Details

Molecular Weight: 23 kDa (MW of target protein)

Application Details

Application Notes: WB: 0.25 µg/mL
Optimal conditions should be determined by the investigator.

Comment: HOM-TES-103 Blocking Peptide, catalog no. 33R-6035, is also available for use as a blocking control in assays to test for specificity of this HOM-TES-103 antibody

Restrictions: For Research Use only

Handling

Format: Lyophilized

Reconstitution: Lyophilized powder. Add distilled water for a 1 mg/mL concentration of HOM-TES-103 antibody in PBS

Concentration: Lot specific

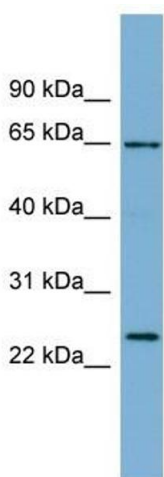
Buffer: PBS

Handling Advice: Avoid repeated freeze/thaw cycles.
Dilute only prior to immediate use.

Storage: 4 °C/-20 °C

Storage Comment: Store at 2-8 °C for short periods. For longer periods of storage, store at -20 °C.

Images



Western Blotting

Image 1. HOM-TES-103 antibody used at 0.25 µg/ml to detect target protein.