

Datasheet for ABIN630638 **anti-ASF1B antibody**



[Go to Product page](#)

1 Image

Overview

Quantity:	100 µL
Target:	ASF1B
Reactivity:	Human, Mouse, Rat, Dog
Host:	Rabbit
Clonality:	Polyclonal
Conjugate:	This ASF1B antibody is un-conjugated
Application:	Western Blotting (WB)

Product Details

Immunogen:	ASF1 B antibody was raised using a synthetic peptide corresponding to a region with amino acids YHGQEFIRVGYYVNN EYLNPELRENPPMKPDFSQLQRNILASNPRVTRFH
Purification:	Affinity purified

Target Details

Target:	ASF1B
Alternative Name:	ASF1B (ASF1B Products)
Background:	ASF1B is a member of the H3/H4 family of histone chaperone proteins and is similar to the anti-silencing function-1 gene in yeast. The encoded protein is the substrate of the tousel-like kinase family of cell cycle-regulated kinases, and may play a key role in modulating the nucleosome structure of chromatin by ensuring a constant supply of histones at sites of nucleosome assembly.

Target Details

Molecular Weight: 22 kDa (MW of target protein)

Pathways: [Regulation of Cell Size](#)

Application Details

Application Notes: WB: 1 µg/mL
Optimal conditions should be determined by the investigator.

Comment: ASF1B Blocking Peptide, catalog no. 33R-10123, is also available for use as a blocking control in assays to test for specificity of this ASF1B antibody

Restrictions: For Research Use only

Handling

Format: Lyophilized

Reconstitution: Lyophilized powder. Add distilled water for a 1 mg/mL concentration of ASF0 antibody in PBS

Concentration: Lot specific

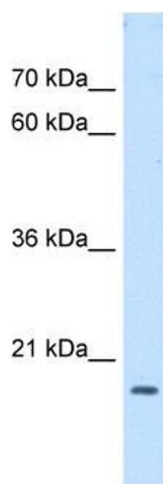
Buffer: PBS

Handling Advice: Avoid repeated freeze/thaw cycles.

Storage: 4 °C/-20 °C

Storage Comment: Store at 2-8 °C for short periods. For longer periods of storage, store at -20 °C.

Images



Western Blotting

Image 1. ASF1B antibody used at 1 µg/ml to detect target protein.