

Datasheet for ABIN630642

**anti-TRIB2 antibody****1** Image[Go to Product page](#)

## Overview

Quantity:	100 µL
Target:	TRIB2
Reactivity:	Human, Mouse, Rat, Dog
Host:	Rabbit
Clonality:	Polyclonal
Conjugate:	This TRIB2 antibody is un-conjugated
Application:	Western Blotting (WB)

## Product Details

Immunogen:	TRIB2 antibody was raised using a synthetic peptide corresponding to a region with amino acids YPFHDIEPSSLFSKIRRGQFNIPETLSPKAKCLIRSILRREPSERLTSQE
Purification:	Affinity purified

## Target Details

Target:	TRIB2
Alternative Name:	TRIB2 ( <a href="#">TRIB2 Products</a> )
Background:	TRIB2 is one of three members of the Tribbles family. The Tribbles members share a Trb domain, which is homologous to protein serine-threonine kinases, but lacks the active site lysine and probably lacks a catalytic function. The Tribbles proteins interact and modulate the activity of signal transduction pathways in a number of physiological and pathological processes. This Tribbles member induces apoptosis of cells mainly of the hematopoietic origin.

## Target Details

---

It has been identified as a protein up-regulated by inflammatory stimuli in myeloid (THP-1) cells, and also as an oncogene that inactivates the transcription factor C/EBPalpha (CCAAT/enhancer-binding protein alpha) and causes acute myelogenous leukemia.

Molecular Weight: 39 kDa (MW of target protein)

## Application Details

---

Application Notes: WB: 1 µg/mL  
Optimal conditions should be determined by the investigator.

Comment: TRIB2 Blocking Peptide, catalog no. 33R-10196, is also available for use as a blocking control in assays to test for specificity of this TRIB2 antibody

Restrictions: For Research Use only

## Handling

---

Format: Lyophilized

Reconstitution: Lyophilized powder. Add distilled water for a 1 mg/mL concentration of TRIB2 antibody in PBS

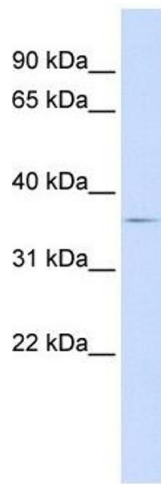
Concentration: Lot specific

Buffer: PBS

Handling Advice: Avoid repeated freeze/thaw cycles.

Storage: 4 °C/-20 °C

Storage Comment: Store at 2-8 °C for short periods. For longer periods of storage, store at -20 °C.



### Western Blotting

**Image 1.** TRIB2 antibody used at 1 ug/ml to detect target protein.