

Datasheet for ABIN630644
anti-Raly antibody (N-Term)

2 Images



[Go to Product page](#)

Overview

Quantity:	100 µL
Target:	Raly (RALY)
Binding Specificity:	N-Term
Reactivity:	Human
Host:	Rabbit
Clonality:	Polyclonal
Conjugate:	This Raly antibody is un-conjugated
Application:	Western Blotting (WB), Immunohistochemistry (IHC)

Product Details

Immunogen:	RALY antibody was raised using the N terminal of RALY corresponding to a region with amino acids NKNDPKSINSRVFIGNLNTALVKKSDVETIFSKYGRVAGCSVHKGYAFVQ
Specificity:	RALY antibody was raised against the N terminal of RALY
Purification:	Affinity purified

Target Details

Target:	Raly (RALY)
Alternative Name:	RALY (RALY Products)
Background:	In infectious mononucleosis, anti-EBNA-1 antibodies are produced which cross-react with multiple normal human proteins. The cross-reactivity is due to anti-gly/ala antibodies that cross-react with host proteins containing configurations like those in the EBNA-1 repeat. One

Target Details

such antigen is RALY which is a member of the heterogeneous nuclear ribonucleoprotein gene family.

Molecular Weight: 30 kDa (MW of target protein)

Application Details

Application Notes: WB: 0.5 µg/mL, IHC: 4-8 µg/mL
Optimal conditions should be determined by the investigator.

Comment: RALY Blocking Peptide, catalog no. 33R-6745, is also available for use as a blocking control in assays to test for specificity of this RALY antibody

Restrictions: For Research Use only

Handling

Format: Lyophilized

Reconstitution: Lyophilized powder. Add distilled water for a 1 mg/mL concentration of RALY antibody in PBS

Concentration: Lot specific

Buffer: PBS

Handling Advice: Avoid repeated freeze/thaw cycles.
Dilute only prior to immediate use.

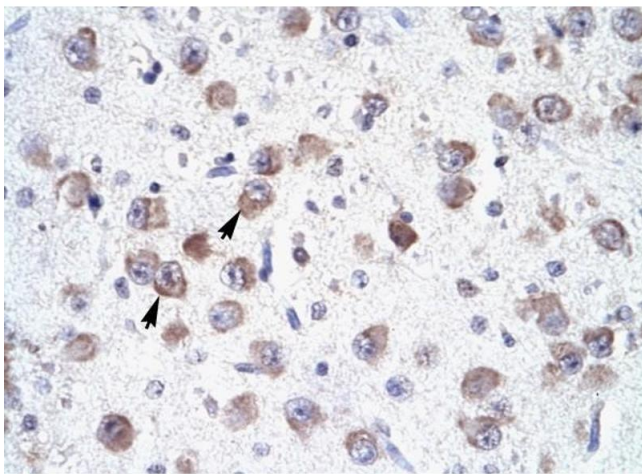
Storage: 4 °C/-20 °C

Storage Comment: Store at 2-8 °C for short periods. For longer periods of storage, store at -20 °C.



Western Blotting

Image 1. RALY antibody used at 0.5 ug/ml to detect target protein.



Immunohistochemistry

Image 2. RALY antibody was used for immunohistochemistry at a concentration of 4-8 ug/ml to stain Neural cells (arrows) in Human Brain. Magnification is at 400X