

Datasheet for ABIN630652 **anti-PPAT antibody (N-Term)**



[Go to Product page](#)

3 Images

Overview

Quantity:	100 µL
Target:	PPAT
Binding Specificity:	N-Term
Reactivity:	Human
Host:	Rabbit
Clonality:	Polyclonal
Conjugate:	This PPAT antibody is un-conjugated
Application:	Western Blotting (WB), Immunohistochemistry (IHC)

Product Details

Immunogen:	PPAT antibody was raised using the N terminal of PPAT corresponding to a region with amino acids VTSDGSSVPTFKSHKGMGLVNHVFTEDNLKKLYVSNLGIGHTRYATTGKC
Specificity:	PPAT antibody was raised against the N terminal of PPAT
Purification:	Affinity purified

Target Details

Target:	PPAT
Alternative Name:	PPAT (PPAT Products)
Background:	PPAT is a member of the purine/pyrimidine phosphoribosyltransferase family. This protein is a regulatory allosteric enzyme that catalyzes the first step of de novo purine nucleotide biosynthesis. Its gene and PAICS/AIRC, a bifunctional enzyme catalyzing steps six and seven in

Target Details

the purine nucleotide biosynthesis pathway, are located in close proximity on chromosome 4.

Molecular Weight: 56 kDa (MW of target protein)

Application Details

Application Notes: WB: 0.25 µg/mL, IHC: 4-8 µg/mL
Optimal conditions should be determined by the investigator.

Comment: PPAT Blocking Peptide, catalog no. 33R-9857, is also available for use as a blocking control in assays to test for specificity of this PPAT antibody

Restrictions: For Research Use only

Handling

Format: Lyophilized

Reconstitution: Lyophilized powder. Add distilled water for a 1 mg/mL concentration of PPAT antibody in PBS

Concentration: Lot specific

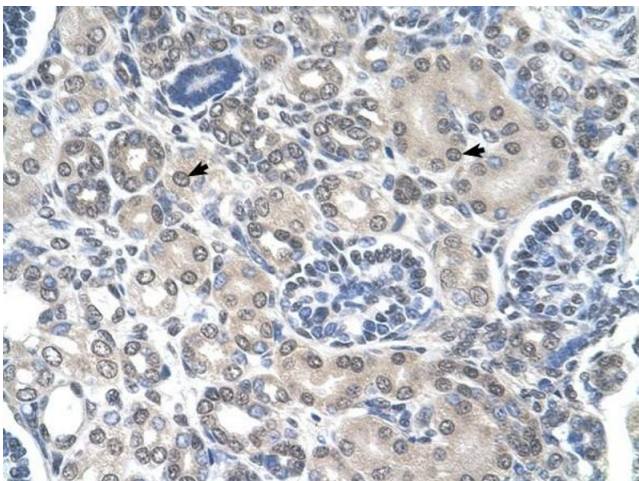
Buffer: PBS

Handling Advice: Avoid repeated freeze/thaw cycles.
Dilute only prior to immediate use.

Storage: 4 °C/-20 °C

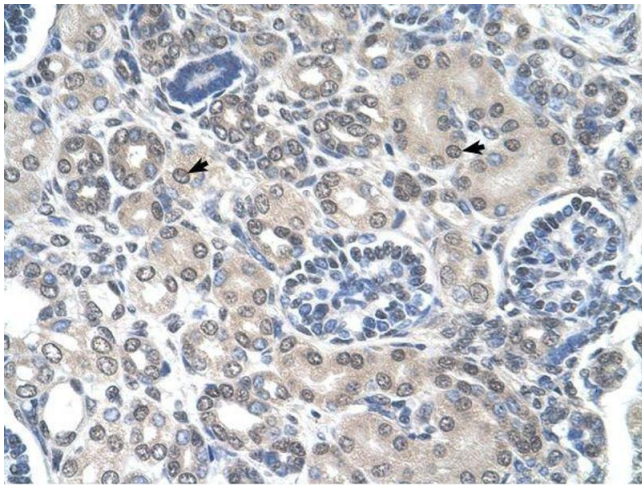
Storage Comment: Store at 2-8 °C for short periods. For longer periods of storage, store at -20 °C.

Images



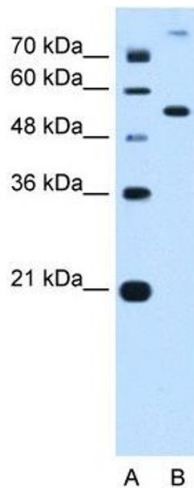
Immunohistochemistry

Image 1. PPAT antibody was used for immunohistochemistry at a concentration of 4-8 µg/ml to stain Epithelial cells of renal tubule (arrows) in Human Kidney. Magnification is at 400X



Immunohistochemistry

Image 2. PPAT antibody was used for immunohistochemistry at a concentration of 4-8 ug/ml. Magnification is at 400X



Western Blotting

Image 3. PPAT antibody used at 0.25 ug/ml to detect target protein.