

Datasheet for ABIN630655 **anti-LPP antibody (N-Term)**



[Go to Product page](#)

1 Image

Overview

Quantity:	100 µL
Target:	LPP
Binding Specificity:	N-Term
Reactivity:	Human
Host:	Rabbit
Clonality:	Polyclonal
Conjugate:	This LPP antibody is un-conjugated
Application:	Western Blotting (WB)

Product Details

Immunogen:	LPP antibody was raised using the N terminal of LPP corresponding to a region with amino acids GKTLEERRSSLD A E I D S L T S I L A D L E C S S P Y K P R P P Q S S T G S T A S P P V S T
Specificity:	LPP antibody was raised against the N terminal of LPP
Purification:	Affinity purified

Target Details

Target:	LPP
Alternative Name:	LPP (LPP Products)
Background:	LPP may play a structural role at sites of cell adhesion in maintaining cell shape and motility. In addition to these structural functions, it may also be implicated in signaling events and activation of gene transcription. LPP may be involved in signal transduction from cell adhesion

Target Details

sites to the nucleus allowing successful integration of signals arising from soluble factors and cell-cell adhesion sites. LPP is also suggested to serve as a scaffold protein upon which distinct protein complexes are assembled in the cytoplasm and in the nucleus.

Molecular Weight: 67 kDa (MW of target protein)

Application Details

Application Notes: WB: 1 µg/mL
Optimal conditions should be determined by the investigator.

Comment: LPP Blocking Peptide, catalog no. 33R-3379, is also available for use as a blocking control in assays to test for specificity of this LPP antibody

Restrictions: For Research Use only

Handling

Format: Lyophilized

Reconstitution: Lyophilized powder. Add distilled water for a 1 mg/mL concentration of LPP antibody in PBS

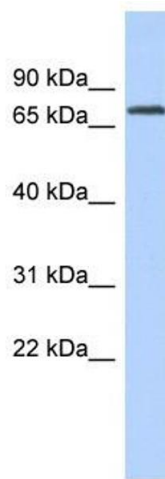
Concentration: Lot specific

Buffer: PBS

Handling Advice: Avoid repeated freeze/thaw cycles.
Dilute only prior to immediate use.

Storage: 4 °C/-20 °C

Storage Comment: Store at 2-8 °C for short periods. For longer periods of storage, store at -20 °C.



Western Blotting

Image 1. LPP antibody used at 1 ug/ml to detect target protein.