

Datasheet for ABIN630669
anti-HIST2H2BF antibody (N-Term)



[Go to Product page](#)

1 Image

Overview

Quantity:	100 µL
Target:	HIST2H2BF
Binding Specificity:	N-Term
Reactivity:	Human, Mouse, Rat
Host:	Rabbit
Clonality:	Polyclonal
Conjugate:	This HIST2H2BF antibody is un-conjugated
Application:	Western Blotting (WB)

Product Details

Immunogen:	HIST2 H2 F antibody was raised using the N terminal of HIST2 2 F corresponding to a region with amino acids MPDPAKSAPAPKKGSKKAVTKVQKKDGKKRKRSRKESYSVYVYKVLKQVH
Specificity:	HIST2 H2 F antibody was raised against the N terminal of HIST2 2 F
Purification:	Affinity purified

Target Details

Target:	HIST2H2BF
Alternative Name:	HIST2H2BF (HIST2H2BF Products)
Background:	HIST2H2BF is the core component of nucleosome. Nucleosomes wrap and compact DNA into chromatin, limiting DNA accessibility to the cellular machineries which require DNA as a template. Histones thereby play a central role in transcription regulation, DNA repair, DNA

Target Details

replication and chromosomal stability. DNA accessibility is regulated via a complex set of post-translational modifications of histones, also called histone code, and nucleosome remodeling.

Molecular Weight: 14 kDa (MW of target protein)

Application Details

Application Notes: WB: 1 µg/mL
Optimal conditions should be determined by the investigator.

Comment: HIST2H2BF Blocking Peptide, catalog no. 33R-6272, is also available for use as a blocking control in assays to test for specificity of this HIST2H2BF antibody

Restrictions: For Research Use only

Handling

Format: Lyophilized

Reconstitution: Lyophilized powder. Add distilled water for a 1 mg/mL concentration of HIST0 0 F antibody in PBS

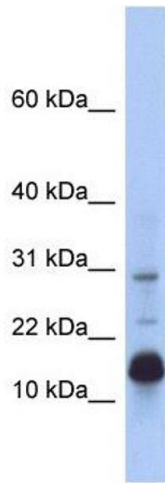
Concentration: Lot specific

Buffer: PBS

Handling Advice: Avoid repeated freeze/thaw cycles.
Dilute only prior to immediate use.

Storage: 4 °C/-20 °C

Storage Comment: Store at 2-8 °C for short periods. For longer periods of storage, store at -20 °C.



Western Blotting

Image 1. HIST2H2BF antibody used at 1 ug/ml to detect target protein.