

Datasheet for ABIN630671

anti-RNF20 antibody (N-Term)[Go to Product page](#)**1** Image

Overview

Quantity:	100 µL
Target:	RNF20
Binding Specificity:	N-Term
Reactivity:	Human, Mouse, Rat
Host:	Rabbit
Clonality:	Polyclonal
Conjugate:	This RNF20 antibody is un-conjugated
Application:	Western Blotting (WB)

Product Details

Immunogen:	RNF20 antibody was raised using the N terminal of RNF20 corresponding to a region with amino acids LKRYDLEQQLGDLKTERKALVVPEPEPDSNQRKDDREREGEGQEPAFS
Specificity:	RNF20 antibody was raised against the N terminal of RNF20
Purification:	Affinity purified

Target Details

Target:	RNF20
Alternative Name:	RNF20 (RNF20 Products)
Background:	RNF20 shares similarity with BRE1 of <i>S. cerevisiae</i> . Yeast BRE1 is an ubiquitin ligase required for the ubiquitination of histone H2B and the methylation of histone H3.

Target Details

Molecular Weight: 114 kDa (MW of target protein)

Application Details

Application Notes: WB: 1 µg/mL
Optimal conditions should be determined by the investigator.

Comment: RNF20 Blocking Peptide, catalog no. 33R-5103, is also available for use as a blocking control in assays to test for specificity of this RNF20 antibody

Restrictions: For Research Use only

Handling

Format: Lyophilized

Reconstitution: Lyophilized powder. Add distilled water for a 1 mg/mL concentration of RNF20 antibody in PBS

Concentration: Lot specific

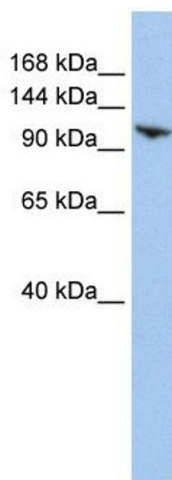
Buffer: PBS

Handling Advice: Avoid repeated freeze/thaw cycles.
Dilute only prior to immediate use.

Storage: 4 °C/-20 °C

Storage Comment: Store at 2-8 °C for short periods. For longer periods of storage, store at -20 °C.

Images



Western Blotting

Image 1. RNF20 antibody used at 1 ug/ml to detect target protein.