

Datasheet for ABIN630696
anti-TUBA3C antibody (N-Term)



[Go to Product page](#)

1 Image

Overview

Quantity:	100 µL
Target:	TUBA3C
Binding Specificity:	N-Term
Reactivity:	Human, Mouse, Rat, Drosophila melanogaster, Arabidopsis
Host:	Rabbit
Clonality:	Polyclonal
Conjugate:	This TUBA3C antibody is un-conjugated
Application:	Western Blotting (WB)

Product Details

Immunogen:	alpha Tubulin 3 C antibody was raised using the N terminal of TUBA3 corresponding to a region with amino acids QMPSDKTIGGGDDSFNTFFSETGAGKHVPRAVFDLEPTVVDEVRTGTYR
Specificity:	Alpha Tubulin 3 C antibody was raised against the N terminal of TUBA3
Purification:	Affinity purified

Target Details

Target:	TUBA3C
Abstract:	TUBA3C Products
Background:	Tubulin is the major constituent of microtubules. It binds two moles of GTP, one at an exchangeable site on the beta chain and one at a non-exchangeable site on the alpha-chain. Microtubules of the eukaryotic cytoskeleton perform essential and diverse functions and

Target Details

are composed of a heterodimer of alpha and beta tubulin. The genes encoding these microtubule constituents are part of the tubulin superfamily, which is composed of six distinct families. Genes from the alpha, beta and gamma tubulin families are found in all eukaryotes.

Molecular Weight: 50 kDa (MW of target protein)

Pathways: [Microtubule Dynamics](#)

Application Details

Application Notes: WB: 1 µg/mL
Optimal conditions should be determined by the investigator.

Comment: alpha Tubulin 3C Blocking Peptide, catalog no. 33R-7656, is also available for use as a blocking control in assays to test for specificity of this alpha Tubulin 3C antibody

Restrictions: For Research Use only

Handling

Format: Lyophilized

Reconstitution: Lyophilized powder. Add distilled water for a 1 mg/mL concentration of TUBA0 antibody in PBS

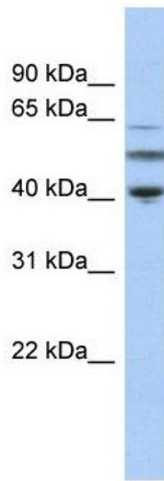
Concentration: Lot specific

Buffer: PBS

Handling Advice: Avoid repeated freeze/thaw cycles.
Dilute only prior to immediate use.

Storage: 4 °C/-20 °C

Storage Comment: Store at 2-8 °C for short periods. For longer periods of storage, store at -20 °C.



Western Blotting

Image 1. alpha Tubulin 3C antibody used at 1 ug/ml to detect target protein.