

Datasheet for ABIN630697 **anti-RBBP7 antibody (N-Term)**



[Go to Product page](#)

1 Image

Overview

Quantity:	100 µL
Target:	RBBP7
Binding Specificity:	N-Term
Reactivity:	Human, Mouse, Rat
Host:	Rabbit
Clonality:	Polyclonal
Conjugate:	This RBBP7 antibody is un-conjugated
Application:	Western Blotting (WB)

Product Details

Immunogen:	RBBP7 antibody was raised using the N terminal of RBBP7 corresponding to a region with amino acids MTHALQWPSLTVQWLPEVTKPEGKDYALHWLVLTGHTSDEQNHLLVVARVH
Specificity:	RBBP7 antibody was raised against the N terminal of RBBP7
Purification:	Affinity purified

Target Details

Target:	RBBP7
Alternative Name:	RBBP7 (RBBP7 Products)
Background:	This protein is a ubiquitously expressed nuclear protein and belongs to a highly conserved subfamily of WD-repeat proteins. It is found among several proteins that binds directly to retinoblastoma protein, which regulates cell proliferation.

Target Details

Molecular Weight: 48 kDa (MW of target protein)

Application Details

Application Notes: WB: 1 µg/mL
Optimal conditions should be determined by the investigator.

Comment: RBBP7 Blocking Peptide, catalog no. 33R-6545, is also available for use as a blocking control in assays to test for specificity of this RBBP7 antibody

Restrictions: For Research Use only

Handling

Format: Lyophilized

Reconstitution: Lyophilized powder. Add distilled water for a 1 mg/mL concentration of RBBP7 antibody in PBS

Concentration: Lot specific

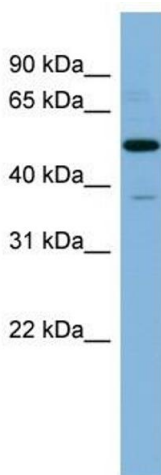
Buffer: PBS

Handling Advice: Avoid repeated freeze/thaw cycles.
Dilute only prior to immediate use.

Storage: 4 °C/-20 °C

Storage Comment: Store at 2-8 °C for short periods. For longer periods of storage, store at -20 °C.

Images



Western Blotting

Image 1. RBBP7 antibody used at 1 ug/ml to detect target protein.