

Datasheet for ABIN630702  
**anti-FBXL3 antibody (Middle Region)**



[Go to Product page](#)

1 Image

## Overview

Quantity:	100 µL
Target:	FBXL3
Binding Specificity:	Middle Region
Reactivity:	Human, Mouse, Rat
Host:	Rabbit
Clonality:	Polyclonal
Conjugate:	This FBXL3 antibody is un-conjugated
Application:	Western Blotting (WB)

## Product Details

Immunogen:	FBXL3 antibody was raised using the middle region of FBXL3 corresponding to a region with amino acids LISTARPSFMDLPKSHFISALTVVFNNSKLSLSSLKIDDTPVDDPSLKVLV
Specificity:	FBXL3 antibody was raised against the middle region of FBXL3
Purification:	Affinity purified

## Target Details

Target:	FBXL3
Alternative Name:	FBXL3 ( <a href="#">FBXL3 Products</a> )
Background:	FBXL3 is a member of the F-box protein family which is characterized by an approximately 40 amino acid motif, the F-box. The F-box proteins constitute one of the four subunits of ubiquitin protein ligase complex called SCFs (SKP1-cullin-F-box), which function in phosphorylation-

## Target Details

---

dependent ubiquitination. The F-box proteins are divided into 3 classes: Fbws containing WD-40 domains, Fbls containing leucine-rich repeats, and Fbxs containing either different protein-protein interaction modules or no recognizable motifs. The protein belongs to the Fbls class and, in addition to an F-box, contains several tandem leucine-rich repeats and is localized in the nucleus.

Molecular Weight: 47 kDa (MW of target protein)

Pathways: [Photoperiodism](#)

## Application Details

---

Application Notes: WB: 1 µg/mL  
Optimal conditions should be determined by the investigator.

Comment: FBXL3 Blocking Peptide, catalog no. 33R-5067, is also available for use as a blocking control in assays to test for specificity of this FBXL3 antibody

Restrictions: For Research Use only

## Handling

---

Format: Lyophilized

Reconstitution: Lyophilized powder. Add distilled water for a 1 mg/mL concentration of FBXL3 antibody in PBS

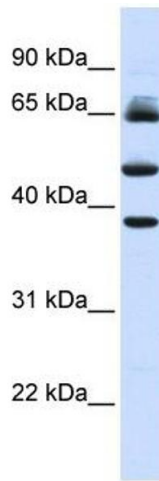
Concentration: Lot specific

Buffer: PBS

Handling Advice: Avoid repeated freeze/thaw cycles.  
Dilute only prior to immediate use.

Storage: 4 °C/-20 °C

Storage Comment: Store at 2-8 °C for short periods. For longer periods of storage, store at -20 °C.



### Western Blotting

**Image 1.** FBXL3 antibody used at 1 ug/ml to detect target protein.