

## Datasheet for ABIN630708 **anti-TUBA3C antibody (N-Term)**



[Go to Product page](#)

### 1 Image

#### Overview

|                      |                                                        |
|----------------------|--------------------------------------------------------|
| Quantity:            | 100 µL                                                 |
| Target:              | TUBA3C                                                 |
| Binding Specificity: | N-Term                                                 |
| Reactivity:          | Human, Mouse, Rat, Drosophila melanogaster, C. elegans |
| Host:                | Rabbit                                                 |
| Clonality:           | Polyclonal                                             |
| Conjugate:           | This TUBA3C antibody is un-conjugated                  |
| Application:         | Western Blotting (WB)                                  |

#### Product Details

|               |                                                                                                                                                                   |
|---------------|-------------------------------------------------------------------------------------------------------------------------------------------------------------------|
| Immunogen:    | alpha Tubulin 3 C antibody was raised using the N terminal of TUBA3 corresponding to a region with amino acids VDLEPTVVDEVRTGTYRQLFHPEQLITGKEDAANNYARGHYTIGKEIVDL |
| Specificity:  | Alpha Tubulin 3 C antibody was raised against the N terminal of TUBA3                                                                                             |
| Purification: | Affinity purified                                                                                                                                                 |

#### Target Details

|             |                                                                                                                                                                                                                                                                                     |
|-------------|-------------------------------------------------------------------------------------------------------------------------------------------------------------------------------------------------------------------------------------------------------------------------------------|
| Target:     | TUBA3C                                                                                                                                                                                                                                                                              |
| Abstract:   | <a href="#">TUBA3C Products</a>                                                                                                                                                                                                                                                     |
| Background: | Microtubules of the eukaryotic cytoskeleton perform essential and diverse functions and are composed of a heterodimer of alpha and beta tubulin. The genes encoding these microtubule constituents are part of the tubulin superfamily, which is composed of six distinct families. |

## Target Details

---

Genes from the alpha, beta and gamma tubulin families are found in all eukaryotes. The alpha and beta tubulins represent the major components of microtubules, while gamma tubulin plays a critical role in the nucleation of microtubule assembly. There are multiple alpha and beta tubulin genes and they are highly conserved among and between species.

Molecular Weight: 50 kDa (MW of target protein)

Pathways: [Microtubule Dynamics](#)

## Application Details

---

Application Notes: WB: 1 µg/mL  
Optimal conditions should be determined by the investigator.

Comment: alpha Tubulin 3C Blocking Peptide, catalog no. 33R-9469, is also available for use as a blocking control in assays to test for specificity of this alpha Tubulin 3C antibody

Restrictions: For Research Use only

## Handling

---

Format: Lyophilized

Reconstitution: Lyophilized powder. Add distilled water for a 1 mg/mL concentration of TUBA0 antibody in PBS

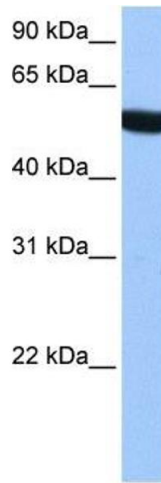
Concentration: Lot specific

Buffer: PBS

Handling Advice: Avoid repeated freeze/thaw cycles.  
Dilute only prior to immediate use.

Storage: 4 °C/-20 °C

Storage Comment: Store at 2-8 °C for short periods. For longer periods of storage, store at -20 °C.



### Western Blotting

**Image 1.** alpha Tubulin 3C antibody used at 1 ug/ml to detect target protein.