

Datasheet for ABIN630717  
**anti-PINX1 antibody (N-Term)**



[Go to Product page](#)

1 Image

## Overview

Quantity:	100 µL
Target:	PINX1
Binding Specificity:	N-Term
Reactivity:	Human
Host:	Rabbit
Clonality:	Polyclonal
Conjugate:	This PINX1 antibody is un-conjugated
Application:	Western Blotting (WB)

## Product Details

Immunogen:	PINX1 antibody was raised using the N terminal of PINX1 corresponding to a region with amino acids EKMGWSKGGKGLGAQEQGATDHIKVVQKNNHLGLGATINNEDNWAHQDDF
Specificity:	PINX1 antibody was raised against the N terminal of PINX1
Purification:	Affinity purified

## Target Details

Target:	PINX1
Alternative Name:	PINX1 ( <a href="#">PINX1 Products</a> )
Background:	PINX1 is a microtubule-binding protein essential for faithful chromosome segregation. PINX1 mediates TRF1 and TERT accumulation in nucleolus and enhances TRF1 binding to telomeres.

## Target Details

---

Molecular Weight: 37 kDa (MW of target protein)

## Application Details

---

Application Notes: WB: 1 µg/mL  
Optimal conditions should be determined by the investigator.

Comment: PINX1 Blocking Peptide, catalog no. 33R-2516, is also available for use as a blocking control in assays to test for specificity of this PINX1 antibody

Restrictions: For Research Use only

## Handling

---

Format: Lyophilized

Reconstitution: Lyophilized powder. Add distilled water for a 1 mg/mL concentration of PINX1 antibody in PBS

Concentration: Lot specific

Buffer: PBS

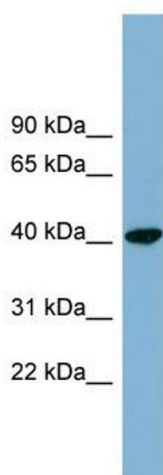
Handling Advice: Avoid repeated freeze/thaw cycles.  
Dilute only prior to immediate use.

Storage: 4 °C/-20 °C

Storage Comment: Store at 2-8 °C for short periods. For longer periods of storage, store at -20 °C.

## Images

---



### Western Blotting

**Image 1.** PINX1 antibody used at 1 µg/ml to detect target protein.