

Datasheet for ABIN630741
anti-METTL11B antibody (C-Term)



[Go to Product page](#)

1 Image

Overview

Quantity:	100 µL
Target:	METTL11B (C1ORF184)
Binding Specificity:	C-Term
Reactivity:	Human
Host:	Rabbit
Clonality:	Polyclonal
Conjugate:	This METTL11B antibody is un-conjugated
Application:	Western Blotting (WB)

Product Details

Immunogen:	C1 ORF184 antibody was raised using the C terminal Of C1 rf184 corresponding to a region with amino acids NVAREGCILDLSOSSVTRDMDILRSLIRKSGLVVLGQEKQDGFPEQCIPV
Specificity:	C1 ORF184 antibody was raised against the C terminal Of C1 rf184
Purification:	Affinity purified

Target Details

Target:	METTL11B (C1ORF184)
Alternative Name:	C1ORF184 (C1ORF184 Products)
Background:	C1orf184 (Alpha-N-methyltransferase) methylates the N-terminus of target proteins containing the N-terminal motif [Ala/Pro/Ser]-Pro-Lys when the initiator Met is cleaved. Specifically catalyzes mono-, di- or tri-methylation of exposed alpha-amino group of Ala, Pro or Ser residue

Target Details

in the [Ala/Pro/Ser]-Pro-Lys motif.

Molecular Weight: 32 kDa (MW of target protein)

Application Details

Application Notes: WB: 1 µg/mL
Optimal conditions should be determined by the investigator.

Comment: C1ORF184 Blocking Peptide, catalog no. 33R-6909, is also available for use as a blocking control in assays to test for specificity of this C1ORF184 antibody

Restrictions: For Research Use only

Handling

Format: Lyophilized

Reconstitution: Lyophilized powder. Add distilled water for a 1 mg/mL concentration of C0 RF184 antibody in PBS

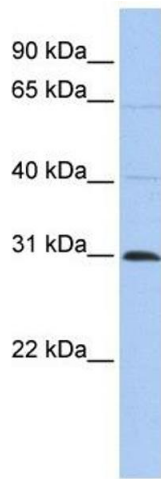
Concentration: Lot specific

Buffer: PBS

Handling Advice: Avoid repeated freeze/thaw cycles.
Dilute only prior to immediate use.

Storage: 4 °C/-20 °C

Storage Comment: Store at 2-8 °C for short periods. For longer periods of storage, store at -20 °C.



Western Blotting

Image 1. C1ORF184 antibody used at 1 ug/ml to detect target protein.