

Datasheet for ABIN630742
anti-LOC642141 antibody (N-Term)



[Go to Product page](#)

1 Image

Overview

Quantity:	100 µL
Target:	LOC642141
Binding Specificity:	N-Term
Reactivity:	Human
Host:	Rabbit
Clonality:	Polyclonal
Conjugate:	This LOC642141 antibody is un-conjugated
Application:	Western Blotting (WB)

Product Details

Immunogen:	LOC642141 antibody was raised using the N terminal Of Loc642141 corresponding to a region with amino acids GIGQPSRTTLSHPPAPNAGHRAAVQNDAQPPSCRVQCRASGSRPEPRSAT
Specificity:	LOC642141 antibody was raised against the N terminal Of Loc642141
Purification:	Affinity purified

Target Details

Target:	LOC642141
Alternative Name:	LOC642141 (LOC642141 Products)
Background:	The function of LOC642141 protein has not been widely studied, and is yet to be fully elucidated.

Target Details

Molecular Weight: 31 kDa (MW of target protein)

Application Details

Application Notes: WB: 1 µg/mL
Optimal conditions should be determined by the investigator.

Comment: LOC642141 Blocking Peptide, catalog no. 33R-3326, is also available for use as a blocking control in assays to test for specificity of this LOC642141 antibody

Restrictions: For Research Use only

Handling

Format: Lyophilized

Reconstitution: Lyophilized powder. Add distilled water for a 1 mg/mL concentration of LOC642141 antibody in PBS

Concentration: Lot specific

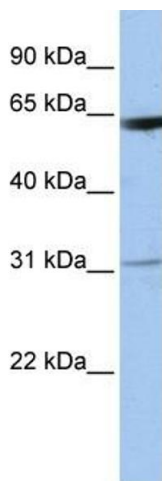
Buffer: PBS

Handling Advice: Avoid repeated freeze/thaw cycles.
Dilute only prior to immediate use.

Storage: 4 °C/-20 °C

Storage Comment: Store at 2-8 °C for short periods. For longer periods of storage, store at -20 °C.

Images



Western Blotting

Image 1. LOC642141 antibody used at 1 ug/ml to detect target protein.