

Datasheet for ABIN630746
anti-NUP35 antibody (C-Term)



[Go to Product page](#)

1 Image

Overview

Quantity:	100 µL
Target:	NUP35
Binding Specificity:	C-Term
Reactivity:	Human, Mouse, Rat
Host:	Rabbit
Clonality:	Polyclonal
Conjugate:	This NUP35 antibody is un-conjugated
Application:	Western Blotting (WB)

Product Details

Immunogen:	NUP35 antibody was raised using the C terminal of NUP35 corresponding to a region with amino acids STPRISTMRPLATAYKASTSDYQVISDRQTPKKDESLVSKAMEYMF _{GW}
Specificity:	NUP35 antibody was raised against the C terminal of NUP35
Purification:	Affinity purified

Target Details

Target:	NUP35
Alternative Name:	NUP35 (NUP35 Products)
Background:	NUP35 is a member of the nucleoporin family. The protein is localized to the nuclear rim and is part of the nuclear pore complex (NPC). All molecules entering or leaving the nucleus either diffuse through or are actively transported by the NPC. This gene encodes a member of the

Target Details

nucleoporin family. The protein is localized to the nuclear rim and is part of the nuclear pore complex (NPC). All molecules entering or leaving the nucleus either diffuse through or are actively transported by the NPC.

Molecular Weight: 35 kDa (MW of target protein)

Application Details

Application Notes: WB: 1 µg/mL
Optimal conditions should be determined by the investigator.

Comment: NUP35 Blocking Peptide, catalog no. 33R-8881, is also available for use as a blocking control in assays to test for specificity of this NUP35 antibody

Restrictions: For Research Use only

Handling

Format: Lyophilized

Reconstitution: Lyophilized powder. Add distilled water for a 1 mg/mL concentration of NUP35 antibody in PBS

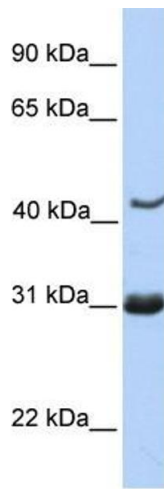
Concentration: Lot specific

Buffer: PBS

Handling Advice: Avoid repeated freeze/thaw cycles.
Dilute only prior to immediate use.

Storage: 4 °C/-20 °C

Storage Comment: Store at 2-8 °C for short periods. For longer periods of storage, store at -20 °C.



Western Blotting

Image 1. NUP35 antibody used at 1 ug/ml to detect target protein.