

Datasheet for ABIN630748
anti-CENPP antibody (N-Term)



[Go to Product page](#)

1 Image

Overview

Quantity:	100 µL
Target:	CENPP
Binding Specificity:	N-Term
Reactivity:	Human
Host:	Rabbit
Clonality:	Polyclonal
Conjugate:	This CENPP antibody is un-conjugated
Application:	Western Blotting (WB)

Product Details

Immunogen:	CENPP antibody was raised using the N terminal of CENPP corresponding to a region with amino acids VQKSFQAIHQFNLEGWKSSKDLKNQLGHLESELSFLSTLTGINIRNHSKQ
Specificity:	CENPP antibody was raised against the N terminal of CENPP
Purification:	Affinity purified

Target Details

Target:	CENPP
Alternative Name:	CENPP (CENPP Products)
Background:	CENPP is the component of the CENPA-CAD (nucleosome distal) complex, a complex recruited to centromeres which is involved in assembly of kinetochore proteins, mitotic progression and chromosome segregation. CENPP may be involved in incorporation of newly synthesized

Target Details

CENPA into centromeres via its interaction with the CENPA-NAC complex.

Molecular Weight: 33 kDa (MW of target protein)

Application Details

Application Notes: WB: 1 µg/mL

Optimal conditions should be determined by the investigator.

Comment: CENPP Blocking Peptide, catalog no. 33R-9748, is also available for use as a blocking control in assays to test for specificity of this CENPP antibody

Restrictions: For Research Use only

Handling

Format: Lyophilized

Reconstitution: Lyophilized powder. Add distilled water for a 1 mg/mL concentration of CENPP antibody in PBS

Concentration: Lot specific

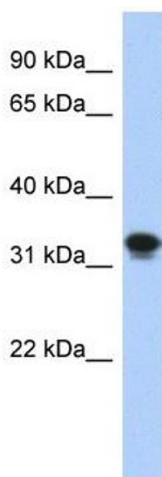
Buffer: PBS

Handling Advice: Avoid repeated freeze/thaw cycles.
Dilute only prior to immediate use.

Storage: 4 °C/-20 °C

Storage Comment: Store at 2-8 °C for short periods. For longer periods of storage, store at -20 °C.

Images



Western Blotting

Image 1. CENPP antibody used at 1 µg/ml to detect target protein.