

Datasheet for ABIN630751
anti-NUP43 antibody (Middle Region)



[Go to Product page](#)

1 Image

Overview

Quantity:	100 µL
Target:	NUP43
Binding Specificity:	Middle Region
Reactivity:	Human, Mouse, Rat
Host:	Rabbit
Clonality:	Polyclonal
Conjugate:	This NUP43 antibody is un-conjugated
Application:	Western Blotting (WB)

Product Details

Immunogen:	NUP43 antibody was raised using the middle region of NUP43 corresponding to a region with amino acids HQSVISSWLSTDPAKDRIEITSLPSRSLSVNTLDVLGPCLVCGTDAEAI
Specificity:	NUP43 antibody was raised against the middle region of NUP43
Purification:	Affinity purified

Target Details

Target:	NUP43
Alternative Name:	NUP43 (NUP43 Products)
Background:	NUP43 is the component of the Nup107-160 subcomplex of the nuclear pore complex (NPC). The Nup107-160 subcomplex is required for the assembly of a functional NPC. The Nup107-160 subcomplex is also required for normal kinetochore microtubule attachment, mitotic

Target Details

progression and chromosome segregation.

Molecular Weight: 42 kDa (MW of target protein)

Application Details

Application Notes: WB: 1 µg/mL

Optimal conditions should be determined by the investigator.

Comment: NUP43 Blocking Peptide, catalog no. 33R-3830, is also available for use as a blocking control in assays to test for specificity of this NUP43 antibody

Restrictions: For Research Use only

Handling

Format: Lyophilized

Reconstitution: Lyophilized powder. Add distilled water for a 1 mg/mL concentration of NUP43 antibody in PBS

Concentration: Lot specific

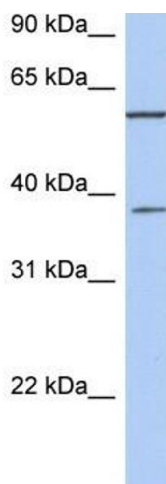
Buffer: PBS

Handling Advice: Avoid repeated freeze/thaw cycles.
Dilute only prior to immediate use.

Storage: 4 °C/-20 °C

Storage Comment: Store at 2-8 °C for short periods. For longer periods of storage, store at -20 °C.

Images



Western Blotting

Image 1. NUP43 antibody used at 1 µg/ml to detect target protein.