

## Datasheet for ABIN630789 **anti-SULT1C2 antibody (C-Term)**



[Go to Product page](#)

### 1 Image

#### Overview

Quantity:	100 µL
Target:	SULT1C2
Binding Specificity:	C-Term
Reactivity:	Human, Mouse, Rat
Host:	Rabbit
Clonality:	Polyclonal
Conjugate:	This SULT1C2 antibody is un-conjugated
Application:	Western Blotting (WB)

#### Product Details

Immunogen:	SULT1 C2 antibody was raised using the C terminal of SULT1 2 corresponding to a region with amino acids LDQSISSFMRKGTVDWKNHFTVAQNERFDEIYRRKMEGTSINFCMEL
Specificity:	SULT1 C2 antibody was raised against the C terminal of SULT1 2
Purification:	Affinity purified

#### Target Details

Target:	SULT1C2
Alternative Name:	SULT1C2 ( <a href="#">SULT1C2 Products</a> )
Background:	Sulfotransferase enzymes catalyze the sulfate conjugation of many hormones, neurotransmitters, drugs, and xenobiotic compounds. These cytosolic enzymes are different in their tissue distributions and substrate specificities. The gene structure (number and length of

## Target Details

---

exons) is similar among family members. SULT1C2 is a protein that belongs to the SULT1 subfamily, responsible for transferring a sulfo moiety from PAPS to phenol-containing compounds.

Molecular Weight: 35 kDa (MW of target protein)

## Application Details

---

Application Notes: WB: 1 µg/mL  
Optimal conditions should be determined by the investigator.

Comment: SULT1C2 Blocking Peptide, catalog no. 33R-4859, is also available for use as a blocking control in assays to test for specificity of this SULT1C2 antibody

Restrictions: For Research Use only

## Handling

---

Format: Lyophilized

Reconstitution: Lyophilized powder. Add distilled water for a 1 mg/mL concentration of SULT1C2 antibody in PBS

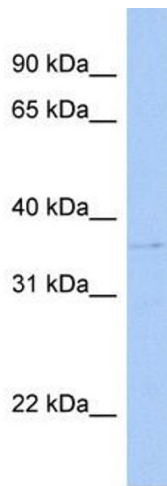
Concentration: Lot specific

Buffer: PBS

Handling Advice: Avoid repeated freeze/thaw cycles.  
Dilute only prior to immediate use.

Storage: 4 °C/-20 °C

Storage Comment: Store at 2-8 °C for short periods. For longer periods of storage, store at -20 °C.



### Western Blotting

**Image 1.** SULT1C2 antibody used at 1 ug/ml to detect target protein.