

Datasheet for ABIN630796
anti-WDR4 antibody (N-Term)



[Go to Product page](#)

1 Image

Overview

Quantity:	100 µL
Target:	WDR4
Binding Specificity:	N-Term
Reactivity:	Human
Host:	Rabbit
Clonality:	Polyclonal
Conjugate:	This WDR4 antibody is un-conjugated
Application:	Western Blotting (WB)

Product Details

Immunogen:	WDR4 antibody was raised using the N terminal of WDR4 corresponding to a region with amino acids FIYDCSAAEKKSQENKGEDAPLDQSGGAILASTFSKSGSYFALTDDSKRL
Specificity:	WDR4 antibody was raised against the N terminal of WDR4
Purification:	Affinity purified

Target Details

Target:	WDR4
Alternative Name:	WDR4 (WDR4 Products)
Background:	WDR4 is a member of the WD repeat protein family. WD repeats are minimally conserved regions of approximately 40 amino acids typically bracketed by gly-his and trp-asp (GH-WD), which may facilitate formation of heterotrimeric or multiprotein complexes. Members of this

Target Details

family are involved in a variety of cellular processes, including cell cycle progression, signal transduction, apoptosis, and gene regulation. This gene is excluded as a candidate for a form of nonsyndromic deafness (DFNB10), but is still a candidate for other disorders mapped to 21q22.3 as well as for the development of Down syndrome phenotypes.

Molecular Weight: 45 kDa (MW of target protein)

Application Details

Application Notes: WB: 1 µg/mL
Optimal conditions should be determined by the investigator.

Comment: WDR4 Blocking Peptide, catalog no. 33R-2940, is also available for use as a blocking control in assays to test for specificity of this WDR4 antibody

Restrictions: For Research Use only

Handling

Format: Lyophilized

Reconstitution: Lyophilized powder. Add distilled water for a 1 mg/mL concentration of WDR4 antibody in PBS

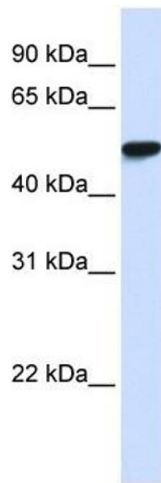
Concentration: Lot specific

Buffer: PBS

Handling Advice: Avoid repeated freeze/thaw cycles.
Dilute only prior to immediate use.

Storage: 4 °C/-20 °C

Storage Comment: Store at 2-8 °C for short periods. For longer periods of storage, store at -20 °C.



Western Blotting

Image 1. WDR4 antibody used at 1 ug/ml to detect target protein.