

Datasheet for ABIN630801 **anti-DTX2 antibody**



[Go to Product page](#)

1 Image

Overview

Quantity:	100 µL
Target:	DTX2
Reactivity:	Human, Dog, Zebrafish (Danio rerio)
Host:	Rabbit
Clonality:	Polyclonal
Conjugate:	This DTX2 antibody is un-conjugated
Application:	Western Blotting (WB)

Product Details

Immunogen:	DTX2 antibody was raised using a synthetic peptide corresponding to a region with amino acids EDCGTILIVYSIPHGIQGPEHPNPGKPFTARGFPRQCYLPDNAQGRKYLE
Purification:	Affinity purified

Target Details

Target:	DTX2
Alternative Name:	DTX2 (DTX2 Products)
Background:	DTX2 is a regulator of Notch signaling, a signaling pathway involved in cell-cell communications that regulates a broad spectrum of cell-fate determinations. DTX2 probably acts both as a positive and negative regulator of Notch, depending on the developmental and cell context and mediates the antineural activity of Notch, possibly by inhibiting the transcriptional activation mediated by MATCH1. It also functions as an ubiquitin ligase protein in vitro, suggesting that it

Target Details

may regulate the Notch pathway via some ubiquitin ligase activity.

Molecular Weight: 62 kDa (MW of target protein)

Pathways: [Notch Signaling](#)

Application Details

Application Notes: WB: 0.25 µg/mL

Optimal conditions should be determined by the investigator.

Comment: DTX2 Blocking Peptide, catalog no. 33R-2305, is also available for use as a blocking control in assays to test for specificity of this DTX2 antibody

Restrictions: For Research Use only

Handling

Format: Lyophilized

Reconstitution: Lyophilized powder. Add distilled water for a 1 mg/mL concentration of DTX2 antibody in PBS

Concentration: Lot specific

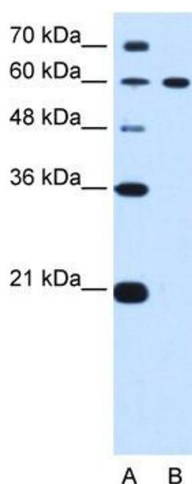
Buffer: PBS

Handling Advice: Avoid repeated freeze/thaw cycles.

Storage: 4 °C/-20 °C

Storage Comment: Store at 2-8 °C for short periods. For longer periods of storage, store at -20 °C.

Images



Western Blotting

Image 1. DTX2 antibody used at 0.25 µg/ml to detect target protein.