

Datasheet for ABIN630806  
**anti-NARG1L antibody (Middle Region)**



[Go to Product page](#)

3 Images

## Overview

Quantity:	100 µL
Target:	NARG1L (NAA16)
Binding Specificity:	Middle Region
Reactivity:	Human, Mouse, Rat
Host:	Rabbit
Clonality:	Polyclonal
Conjugate:	This NARG1L antibody is un-conjugated
Application:	Western Blotting (WB), Immunohistochemistry (IHC)

## Product Details

Immunogen:	NARG1 L antibody was raised using the middle region of NARG1 corresponding to a region with amino acids ASLKTCDFFSPYENGEKEPPTLLWVQYFLAQHFDKLQYSLALDYINAA
Specificity:	NARG1 L antibody was raised against the middle region of NARG1
Purification:	Affinity purified

## Target Details

Target:	NARG1L (NAA16)
Alternative Name:	<a href="#">NARG1L (NAA16 Products)</a>
Background:	NARG1L may belong to a complex displaying N-terminal acetyltransferase activity.
Molecular Weight:	50 kDa (MW of target protein)

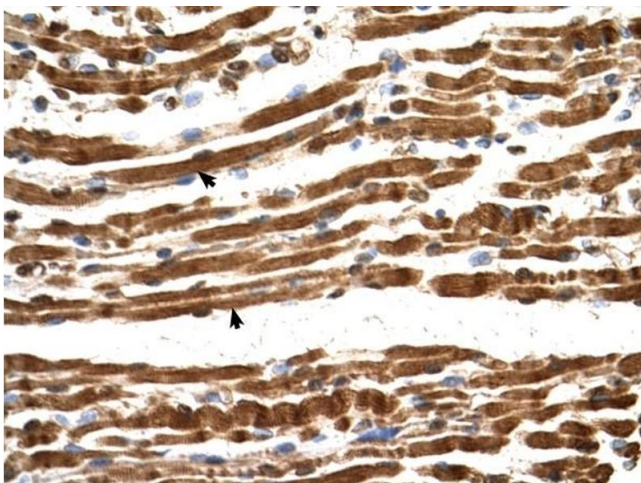
## Application Details

Application Notes:	WB: 0.5 µg/mL, IHC: 4-8 µg/mL Optimal conditions should be determined by the investigator.
Comment:	NARG1L Blocking Peptide, catalog no. 33R-1516, is also available for use as a blocking control in assays to test for specificity of this NARG1L antibody
Restrictions:	For Research Use only

## Handling

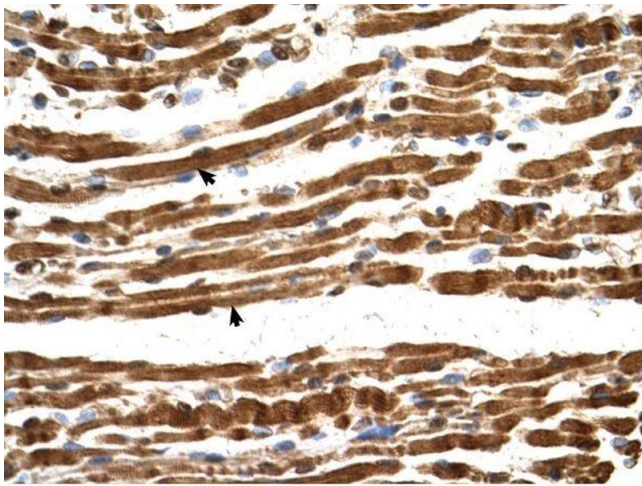
Format:	Lyophilized
Reconstitution:	Lyophilized powder. Add distilled water for a 1 mg/mL concentration of NARG0 antibody in PBS
Concentration:	Lot specific
Buffer:	PBS
Handling Advice:	Avoid repeated freeze/thaw cycles. Dilute only prior to immediate use.
Storage:	4 °C/-20 °C
Storage Comment:	Store at 2-8 °C for short periods. For longer periods of storage, store at -20 °C.

## Images



### Immunohistochemistry

**Image 1.** NARG1L antibody was used for immunohistochemistry at a concentration of 4-8 µg/ml to stain Skeletal muscle cells (arrows) in Human Muscle. Magnification is at 400X



### Immunohistochemistry

**Image 2.** NARG1L antibody was used for immunohistochemistry at a concentration of 4-8 ug/ml. Magnification is at 400X



### Western Blotting

**Image 3.** NARG1L antibody used at 0.5 ug/ml to detect target protein.