

## Datasheet for ABIN630807 **anti-GPSM2 antibody**

### 2 Images



[Go to Product page](#)

### Overview

Quantity:	100 µL
Target:	GPSM2
Reactivity:	Human, Mouse, Rat
Host:	Rabbit
Clonality:	Polyclonal
Conjugate:	This GPSM2 antibody is un-conjugated
Application:	Western Blotting (WB)

### Product Details

Immunogen:	GPSM2 antibody was raised using a synthetic peptide corresponding to a region with amino acids YFYLDHYAKALEYHHHDLTLARTIGDQLGEAKASGNLGNLTKVLGNFDEA
Purification:	Affinity purified

### Target Details

Target:	GPSM2
Alternative Name:	GPSM2 ( <a href="#">GPSM2 Products</a> )
Background:	Heterotrimeric G proteins transduce extracellular signals received by cell surface receptors into integrated cellular responses. GPSM2 belongs to a group of proteins that modulate activation of G proteins.
Molecular Weight:	76 kDa (MW of target protein)
Pathways:	<a href="#">Regulation of G-Protein Coupled Receptor Protein Signaling</a>

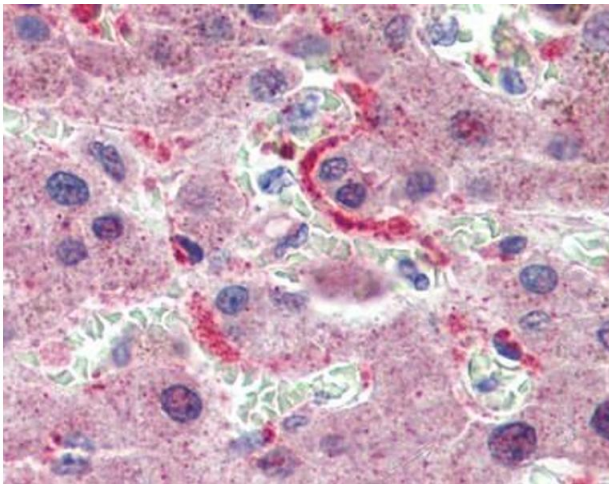
## Application Details

Application Notes:	WB: 1 µg/mL Optimal conditions should be determined by the investigator.
Comment:	GPSM2 Blocking Peptide, catalog no. 33R-10101, is also available for use as a blocking control in assays to test for specificity of this GPSM2 antibody
Restrictions:	For Research Use only

## Handling

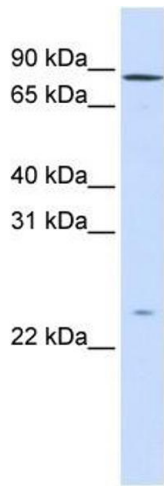
Format:	Lyophilized
Reconstitution:	Lyophilized powder. Add distilled water for a 1 mg/mL concentration of GPSM2 antibody in PBS
Concentration:	Lot specific
Buffer:	PBS
Handling Advice:	Avoid repeated freeze/thaw cycles.
Storage:	4 °C/-20 °C
Storage Comment:	Store at 2-8 °C for short periods. For longer periods of storage, store at -20 °C.

## Images



### Immunohistochemistry

**Image 1.** GPSM2 antibody was used for immunohistochemistry at a concentration of 4-8 µg/ml. Magnification is at 400X



### Western Blotting

**Image 2.** GPSM2 antibody used at 1 ug/ml to detect target protein.