

## Datasheet for ABIN630816 **anti-HAL antibody (N-Term)**

### 2 Images



[Go to Product page](#)

### Overview

Quantity:	100 µL
Target:	HAL
Binding Specificity:	N-Term
Reactivity:	Human, Mouse, Rat
Host:	Rabbit
Clonality:	Polyclonal
Conjugate:	This HAL antibody is un-conjugated
Application:	Western Blotting (WB)

### Product Details

Immunogen:	HAL antibody was raised using the N terminal of HAL corresponding to a region with amino acids INKLQELQVNLVRSHTSSGVGKPLSPERCRLMLLALRINVLAKGYSGISLET
Specificity:	HAL antibody was raised against the N terminal of HAL
Purification:	Affinity purified

### Target Details

Target:	HAL
Alternative Name:	HAL ( <a href="#">HAL Products</a> )
Background:	HAL is a cytosolic enzyme catalyzing the first reaction in histidine catabolism, the nonoxidative deamination of L-histidine to trans-urocanic acid. HAL defects cause histidinemia which is characterized by increased histidine and histamine and decreased urocanic acid in body fluids.

## Target Details

---

Molecular Weight: 72 kDa (MW of target protein)

## Application Details

---

Application Notes: WB: 1 µg/mL  
Optimal conditions should be determined by the investigator.

Comment: HAL Blocking Peptide, catalog no. 33R-4075, is also available for use as a blocking control in assays to test for specificity of this HAL antibody

Restrictions: For Research Use only

## Handling

---

Format: Lyophilized

Reconstitution: Lyophilized powder. Add distilled water for a 1 mg/mL concentration of HAL antibody in PBS

Concentration: Lot specific

Buffer: PBS

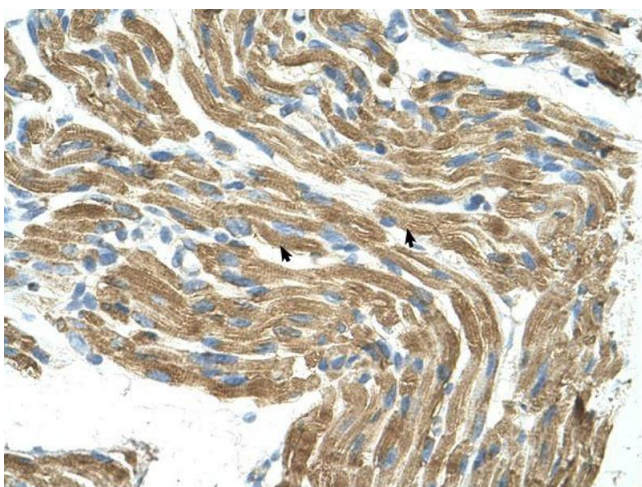
Handling Advice: Avoid repeated freeze/thaw cycles.  
Dilute only prior to immediate use.

Storage: 4 °C/-20 °C

Storage Comment: Store at 2-8 °C for short periods. For longer periods of storage, store at -20 °C.

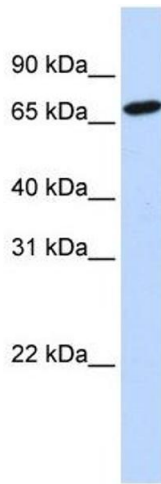
## Images

---



### Immunohistochemistry

**Image 1.** HAL antibody was used for immunohistochemistry at a concentration of 4-8 µg/ml. Magnification is at 400X



### Western Blotting

**Image 2.** HAL antibody used at 1 ug/ml to detect target protein.