

## Datasheet for ABIN630829 **anti-ATE1 antibody (N-Term)**



[Go to Product page](#)

### 1 Image

#### Overview

Quantity:	100 µL
Target:	ATE1
Binding Specificity:	N-Term
Reactivity:	Human
Host:	Rabbit
Clonality:	Polyclonal
Conjugate:	This ATE1 antibody is un-conjugated
Application:	Western Blotting (WB)

#### Product Details

Immunogen:	ATE1 antibody was raised using the N terminal of ATE1 corresponding to a region with amino acids CCPQYTIRCRPLQFQPSKSHKKVLKKMLKFLAKGEVPKGSCDEPMDSTM
Specificity:	ATE1 antibody was raised against the N terminal of ATE1
Purification:	Affinity purified

#### Target Details

Target:	ATE1
Alternative Name:	ATE1 ( <a href="#">ATE1 Products</a> )
Background:	ATE1 is an arginyltransferase, an enzyme that is involved in posttranslational conjugation of arginine to N-terminal aspartate or glutamate residues. Conjugation of arginine to the N-terminal aspartate or glutamate targets proteins for ubiquitin-dependent degradation.

## Target Details

---

Alternative splicing results in two transcript variants encoding distinct isoforms.

Molecular Weight: 59 kDa (MW of target protein)

Pathways: [SARS-CoV-2 Protein Interactome](#)

## Application Details

---

Application Notes: WB: 1 µg/mL

Optimal conditions should be determined by the investigator.

Comment: ATE1 Blocking Peptide, catalog no. 33R-1654, is also available for use as a blocking control in assays to test for specificity of this ATE1 antibody

Restrictions: For Research Use only

## Handling

---

Format: Lyophilized

Reconstitution: Lyophilized powder. Add distilled water for a 1 mg/mL concentration of ATE1 antibody in PBS

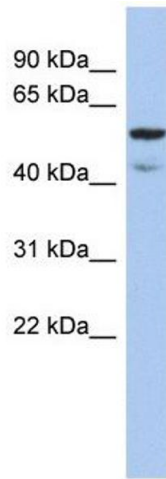
Concentration: Lot specific

Buffer: PBS

Handling Advice: Avoid repeated freeze/thaw cycles.  
Dilute only prior to immediate use.

Storage: 4 °C/-20 °C

Storage Comment: Store at 2-8 °C for short periods. For longer periods of storage, store at -20 °C.



### Western Blotting

**Image 1.** ATE1 antibody used at 1 ug/ml to detect target protein.