

Datasheet for ABIN630831
anti-Copine IV antibody (C-Term)



[Go to Product page](#)

1 Image

Overview

Quantity:	100 µL
Target:	Copine IV (CPNE4)
Binding Specificity:	C-Term
Reactivity:	Human, Mouse, Rat
Host:	Rabbit
Clonality:	Polyclonal
Conjugate:	This Copine IV antibody is un-conjugated
Application:	Western Blotting (WB)

Product Details

Immunogen:	Copine IV antibody was raised using the C terminal of CPNE4 corresponding to a region with amino acids EAYQSCLPKLQLYGPTNIAPIIQKVAKSASEETNTKEASQYFILLILTGD
Specificity:	Copine IV antibody was raised against the C terminal of CPNE4
Purification:	Affinity purified

Target Details

Target:	Copine IV (CPNE4)
Alternative Name:	Copine IV (CPNE4 Products)
Background:	Calcium-dependent membrane-binding proteins may regulate molecular events at the interface of the cell membrane and cytoplasm. This gene is one of several genes that encode a calcium-dependent protein containing two N-terminal type II C2 domains and an integrin A domain-like

Target Details

sequence in the C-terminus.

Molecular Weight: 62 kDa (MW of target protein)

Application Details

Application Notes: WB: 1 µg/mL

Optimal conditions should be determined by the investigator.

Comment: Copine IV Blocking Peptide, catalog no. 33R-2291, is also available for use as a blocking control in assays to test for specificity of this Copine IV antibody

Restrictions: For Research Use only

Handling

Format: Lyophilized

Reconstitution: Lyophilized powder. Add distilled water for a 1 mg/mL concentration of CPNE4 antibody in PBS

Concentration: Lot specific

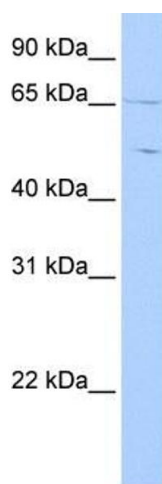
Buffer: PBS

Handling Advice: Avoid repeated freeze/thaw cycles.
Dilute only prior to immediate use.

Storage: 4 °C/-20 °C

Storage Comment: Store at 2-8 °C for short periods. For longer periods of storage, store at -20 °C.

Images



Western Blotting

Image 1. Copine IV antibody used at 1 µg/ml to detect target protein.