

Datasheet for ABIN630834
anti-PNPLA8 antibody (Middle Region)



[Go to Product page](#)

1 Image

Overview

Quantity:	100 µL
Target:	PNPLA8
Binding Specificity:	Middle Region
Reactivity:	Human, Mouse, Rat
Host:	Rabbit
Clonality:	Polyclonal
Conjugate:	This PNPLA8 antibody is un-conjugated
Application:	Western Blotting (WB)

Product Details

Immunogen:	PNPLA8 antibody was raised using the middle region of PNPLA8 corresponding to a region with amino acids IDNRTRALVQALRRITDPKLCITRVEELTFHLLLEFPEGKGVAVKERIIPY
Specificity:	PNPLA8 antibody was raised against the middle region of PNPLA8
Purification:	Affinity purified

Target Details

Target:	PNPLA8
Alternative Name:	PNPLA8 (PNPLA8 Products)
Background:	Phospholipase A2 catalyzes cleavage of fatty acids from phospholipids, thereby regulating membrane physical properties and the release of lipid second messengers and growth factors.

Target Details

Molecular Weight: 88 kDa (MW of target protein)

Application Details

Application Notes: WB: 1 µg/mL
Optimal conditions should be determined by the investigator.

Comment: PNPLA8 Blocking Peptide, catalog no. 33R-3926, is also available for use as a blocking control in assays to test for specificity of this PNPLA8 antibody

Restrictions: For Research Use only

Handling

Format: Lyophilized

Reconstitution: Lyophilized powder. Add distilled water for a 1 mg/mL concentration of PNPLA8 antibody in PBS

Concentration: Lot specific

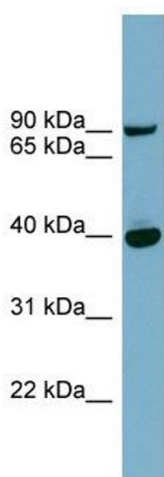
Buffer: PBS

Handling Advice: Avoid repeated freeze/thaw cycles.
Dilute only prior to immediate use.

Storage: 4 °C/-20 °C

Storage Comment: Store at 2-8 °C for short periods. For longer periods of storage, store at -20 °C.

Images



Western Blotting

Image 1. PNPLA8 antibody used at 1 ug/ml to detect target protein.