

Datasheet for ABIN630840

anti-FLII antibody[Go to Product page](#)**1** Image

Overview

Quantity:	100 µL
Target:	FLII
Reactivity:	Human, Mouse, Rat
Host:	Rabbit
Clonality:	Polyclonal
Conjugate:	This FLII antibody is un-conjugated
Application:	Western Blotting (WB)

Product Details

Immunogen:	FLII antibody was raised using a synthetic peptide corresponding to a region with amino acids LAEDILNTMFDTSYSKQVINEGEEPENFFWVGIGAQKPYDDDAEYMKHTR
Purification:	Affinity purified

Target Details

Target:	FLII
Alternative Name:	FLII (FLII Products)
Background:	FLII is a protein with a gelsolin-like actin binding domain and an N-terminal leucine-rich repeat-protein protein interaction domain. The protein is similar to a Drosophila protein involved in early embryogenesis and the structural organization of indirect flight muscle. This gene is located within the Smith-Magenis syndrome region on chromosome 17.
Molecular Weight:	145 kDa (MW of target protein)

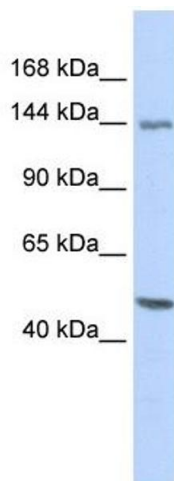
Application Details

Application Notes:	WB: 1 µg/mL Optimal conditions should be determined by the investigator.
Comment:	FLII Blocking Peptide, catalog no. 33R-4761, is also available for use as a blocking control in assays to test for specificity of this FLII antibody
Restrictions:	For Research Use only

Handling

Format:	Lyophilized
Reconstitution:	Lyophilized powder. Add distilled water for a 1 mg/mL concentration of FLII antibody in PBS
Concentration:	Lot specific
Buffer:	PBS
Handling Advice:	Avoid repeated freeze/thaw cycles.
Storage:	4 °C/-20 °C
Storage Comment:	Store at 2-8 °C for short periods. For longer periods of storage, store at -20 °C.

Images



Western Blotting

Image 1. FLII antibody used at 1 ug/ml to detect target protein.