

Datasheet for ABIN630857
anti-ARHGEF25/GEFT antibody (C-Term)



[Go to Product page](#)

1 Image

Overview

Quantity:	100 µL
Target:	ARHGEF25/GEFT (ARHGEF25)
Binding Specificity:	C-Term
Reactivity:	Human
Host:	Rabbit
Clonality:	Polyclonal
Conjugate:	This ARHGEF25/GEFT antibody is un-conjugated
Application:	Western Blotting (WB)

Product Details

Immunogen:	GEFT antibody was raised using the C terminal of GEFT corresponding to a region with amino acids RLGDQAQGSTHTPINGSLPSLLLSPKGEVARALLPLDKQALGDIPQAPHD
Specificity:	GEFT antibody was raised against the C terminal of GEFT
Purification:	Affinity purified

Target Details

Target:	ARHGEF25/GEFT (ARHGEF25)
Alternative Name:	GEFT (ARHGEF25 Products)
Background:	The Rho family of small GTPases act as molecular switches to control a wide range of cellular processes. Guanine nucleotide exchange factors (GEFs), like GEFT, activate Rho GTPases by accelerating GDP/GTP exchange.

Target Details

Molecular Weight: 64 kDa (MW of target protein)

Application Details

Application Notes: WB: 1 µg/mL
Optimal conditions should be determined by the investigator.

Comment: GEFT Blocking Peptide, catalog no. 33R-8023, is also available for use as a blocking control in assays to test for specificity of this GEFT antibody

Restrictions: For Research Use only

Handling

Format: Lyophilized

Reconstitution: Lyophilized powder. Add distilled water for a 1 mg/mL concentration of GEFT antibody in PBS

Concentration: Lot specific

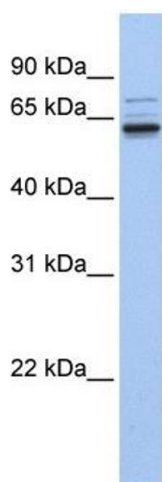
Buffer: PBS

Handling Advice: Avoid repeated freeze/thaw cycles.
Dilute only prior to immediate use.

Storage: 4 °C/-20 °C

Storage Comment: Store at 2-8 °C for short periods. For longer periods of storage, store at -20 °C.

Images



Western Blotting

Image 1. GEFT antibody used at 1 ug/ml to detect target protein.