

Datasheet for ABIN630866
anti-PPAT antibody (C-Term)



[Go to Product page](#)

1 Image

Overview

Quantity:	100 µL
Target:	PPAT
Binding Specificity:	C-Term
Reactivity:	Human
Host:	Rabbit
Clonality:	Polyclonal
Conjugate:	This PPAT antibody is un-conjugated
Application:	Western Blotting (WB)

Product Details

Immunogen:	PPAT antibody was raised using the C terminal of PPAT corresponding to a region with amino acids QEGIKFKKQKEKKHDIMIQENGNGLECFEKSGHCTACLTGKYPVELEW
Specificity:	PPAT antibody was raised against the C terminal of PPAT
Purification:	Affinity purified

Target Details

Target:	PPAT
Alternative Name:	PPAT (PPAT Products)
Background:	PPAT is a member of the purine/pyrimidine phosphoribosyltransferase family. This protein is a regulatory allosteric enzyme that catalyzes the first step of de novo purine nucleotide biosynthesis. Its gene and PAICS/AIRC, a bifunctional enzyme catalyzing steps six and seven in

Target Details

the purine nucleotide biosynthesis pathway, are located in close proximity on chromosome 4.

Molecular Weight: 56 kDa (MW of target protein)

Application Details

Application Notes: WB: 1 µg/mL
Optimal conditions should be determined by the investigator.

Comment: PPAT Blocking Peptide, catalog no. 33R-7523, is also available for use as a blocking control in assays to test for specificity of this PPAT antibody

Restrictions: For Research Use only

Handling

Format: Lyophilized

Reconstitution: Lyophilized powder. Add distilled water for a 1 mg/mL concentration of PPAT antibody in PBS

Concentration: Lot specific

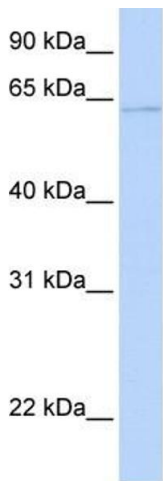
Buffer: PBS

Handling Advice: Avoid repeated freeze/thaw cycles.
Dilute only prior to immediate use.

Storage: 4 °C/-20 °C

Storage Comment: Store at 2-8 °C for short periods. For longer periods of storage, store at -20 °C.

Images



Western Blotting

Image 1. PPAT antibody used at 1 ug/ml to detect target protein.