

Datasheet for ABIN630868
anti-CENPM antibody (Middle Region)



[Go to Product page](#)

1 Image

Overview

Quantity:	100 µL
Target:	CENPM
Binding Specificity:	Middle Region
Reactivity:	Human
Host:	Rabbit
Clonality:	Polyclonal
Conjugate:	This CENPM antibody is un-conjugated
Application:	Western Blotting (WB)

Product Details

Immunogen:	CENPM antibody was raised using the middle region of CENPM corresponding to a region with amino acids CDLEVEGFRATMAQLRVLQICAGHVPGVSNLLSLLRSSEGPSLEDL
Specificity:	CENPM antibody was raised against the middle region of CENPM
Purification:	Affinity purified

Target Details

Target:	CENPM
Alternative Name:	CENPM (CENPM Products)
Background:	The centromere is a specialized chromatin domain, present throughout the cell cycle, that acts as a platform on which the transient assembly of the kinetochore occurs during mitosis. All active centromeres are characterized by the presence of long arrays of nucleosomes in which

Target Details

CENPA replaces histone H3. CENPM is an additional factor required for centromere assembly.

Molecular Weight: 20 kDa (MW of target protein)

Application Details

Application Notes: WB: 1 µg/mL
Optimal conditions should be determined by the investigator.

Comment: CENPM Blocking Peptide, catalog no. 33R-1666, is also available for use as a blocking control in assays to test for specificity of this CENPM antibody

Restrictions: For Research Use only

Handling

Format: Lyophilized

Reconstitution: Lyophilized powder. Add distilled water for a 1 mg/mL concentration of CENPM antibody in PBS

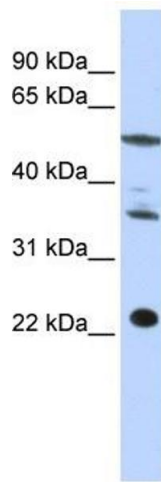
Concentration: Lot specific

Buffer: PBS

Handling Advice: Avoid repeated freeze/thaw cycles.
Dilute only prior to immediate use.

Storage: 4 °C/-20 °C

Storage Comment: Store at 2-8 °C for short periods. For longer periods of storage, store at -20 °C.



Western Blotting

Image 1. CENPM antibody used at 1 ug/ml to detect target protein.