

Datasheet for ABIN630869
anti-FANCE antibody (Middle Region)



[Go to Product page](#)

1 Image

Overview

Quantity:	100 µL
Target:	FANCE
Binding Specificity:	AA 1-13, Middle Region
Reactivity:	Human
Host:	Rabbit
Clonality:	Polyclonal
Conjugate:	This FANCE antibody is un-conjugated
Application:	Western Blotting (WB)

Product Details

Immunogen:	FANCE antibody was raised using the middle region of FANCE corresponding to a region with amino acids SPQAPDPEEEENRDSQQPGKRRKDSEEEAASPEGKRVPKRLRCWEEEEEDH
Specificity:	FANCE antibody was raised against the middle region of FANCE
Purification:	Affinity purified

Target Details

Target:	FANCE
Alternative Name:	FANCE (FANCE Products)
Background:	The Fanconi anemia complementation group (FANC) currently includes FANCA, FANCB, FANCC, FANCD1 (also called BRCA2), FANCD2, FANCE, FANCF, FANCG, FANCI, FANCI (also called BRIP1), FANCL, FANCM and FANCN (also called PALB2). The previously defined group

Target Details

FANCH is the same as FANCA. Fanconi anemia is a genetically heterogeneous recessive disorder characterized by cytogenetic instability, hypersensitivity to DNA crosslinking agents, increased chromosomal breakage, and defective DNA repair.

Molecular Weight: 59 kDa (MW of target protein)

Pathways: [DNA Damage Repair](#)

Application Details

Application Notes: WB: 1 µg/mL
Optimal conditions should be determined by the investigator.

Comment: FANCE Blocking Peptide, catalog no. 33R-8689, is also available for use as a blocking control in assays to test for specificity of this FANCE antibody

Restrictions: For Research Use only

Handling

Format: Lyophilized

Reconstitution: Lyophilized powder. Add distilled water for a 1 mg/mL concentration of FANCE antibody in PBS

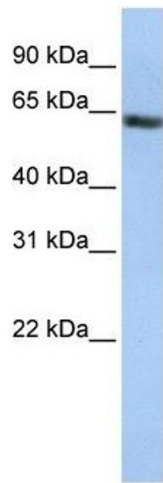
Concentration: Lot specific

Buffer: PBS

Handling Advice: Avoid repeated freeze/thaw cycles.
Dilute only prior to immediate use.

Storage: 4 °C/-20 °C

Storage Comment: Store at 2-8 °C for short periods. For longer periods of storage, store at -20 °C.



Western Blotting

Image 1. FANCE antibody used at 1 ug/ml to detect target protein.