

Datasheet for ABIN630870 **anti-POLR3B antibody (C-Term)**



[Go to Product page](#)

1 Image

Overview

Quantity:	100 µL
Target:	POLR3B
Binding Specificity:	C-Term
Reactivity:	Human, Mouse, Rat, Drosophila melanogaster
Host:	Rabbit
Clonality:	Polyclonal
Conjugate:	This POLR3B antibody is un-conjugated
Application:	Western Blotting (WB)

Product Details

Immunogen:	POLR3 B antibody was raised using the C terminal of POLR3 corresponding to a region with amino acids IEKVMISSNAEDAFLIKMLLRQTRRPEIGDKFSSRHGQKGVCGLIVPQED
Specificity:	POLR3 B antibody was raised against the C terminal of POLR3
Purification:	Affinity purified

Target Details

Target:	POLR3B
Alternative Name:	POLR3B (POLR3B Products)
Background:	POLR3B belongs to the RNA polymerase beta chain family. DNA-dependent RNA polymerase catalyzes the transcription of DNA into RNA using the four ribonucleoside triphosphates as substrates. POLR3B is the second largest core component of RNA polymerase III which

Target Details

synthesizes small RNAs, such as 5S rRNA and tRNAs. It is proposed to contribute to the polymerase catalytic activity and forms the polymerase active center together with the largest subunit. Pol III is composed of mobile elements and RPC2 is part of the core element with the central large cleft and probably a clamp element that moves to open and close the cleft.

Molecular Weight: 128 kDa (MW of target protein)

Application Details

Application Notes: WB: 1 µg/mL
Optimal conditions should be determined by the investigator.

Comment: POLR3B Blocking Peptide, catalog no. 33R-3943, is also available for use as a blocking control in assays to test for specificity of this POLR3B antibody

Restrictions: For Research Use only

Handling

Format: Lyophilized

Reconstitution: Lyophilized powder. Add distilled water for a 1 mg/mL concentration of POLR0 antibody in PBS

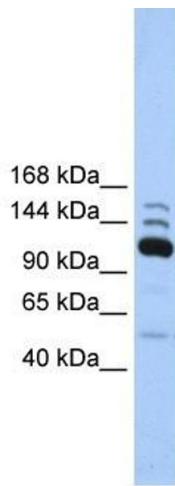
Concentration: Lot specific

Buffer: PBS

Handling Advice: Avoid repeated freeze/thaw cycles.
Dilute only prior to immediate use.

Storage: 4 °C/-20 °C

Storage Comment: Store at 2-8 °C for short periods. For longer periods of storage, store at -20 °C.



Western Blotting

Image 1. POLR3B antibody used at 1 ug/ml to detect target protein.