

Datasheet for ABIN630871  
**anti-PHACTR3 antibody (C-Term)**



[Go to Product page](#)

1 Image

## Overview

Quantity:	100 µL
Target:	PHACTR3
Binding Specificity:	C-Term
Reactivity:	Human, Mouse, Rat
Host:	Rabbit
Clonality:	Polyclonal
Conjugate:	This PHACTR3 antibody is un-conjugated
Application:	Western Blotting (WB)

## Product Details

Immunogen:	PHACTR3 antibody was raised using the C terminal of PHACTR3 corresponding to a region with amino acids IEMKLSKRLSQRPAVEELERRNILKQRNDQTEQEERREIKQLTRKLNQR
Specificity:	PHACTR3 antibody was raised against the C terminal of PHACTR3
Purification:	Affinity purified

## Target Details

Target:	PHACTR3
Alternative Name:	PHACTR3 ( <a href="#">PHACTR3 Products</a> )
Background:	PHACTR3 is associated with the nuclear scaffold in proliferating cells. It was found to bind to the catalytic subunit of protein phosphatase-1 (PP1) and inhibit PP1 activity, suggesting that this protein may function as a regulatory subunit of PP1.

## Target Details

---

Molecular Weight: 51 kDa (MW of target protein)

## Application Details

---

Application Notes: WB: 1 µg/mL  
Optimal conditions should be determined by the investigator.

Comment: PHACTR3 Blocking Peptide, catalog no. 33R-3947, is also available for use as a blocking control in assays to test for specificity of this PHACTR3 antibody

Restrictions: For Research Use only

## Handling

---

Format: Lyophilized

Reconstitution: Lyophilized powder. Add distilled water for a 1 mg/mL concentration of PHACTR3 antibody in PBS

Concentration: Lot specific

Buffer: PBS

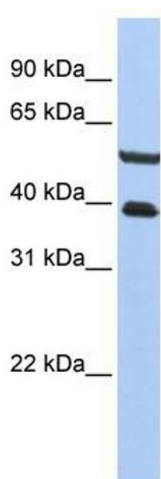
Handling Advice: Avoid repeated freeze/thaw cycles.  
Dilute only prior to immediate use.

Storage: 4 °C/-20 °C

Storage Comment: Store at 2-8 °C for short periods. For longer periods of storage, store at -20 °C.

## Images

---



### Western Blotting

**Image 1.** PHACTR3 antibody used at 1 µg/ml to detect target protein.