

Datasheet for ABIN630872
anti-PECI/ECI2 antibody (Middle Region)



[Go to Product page](#)

1 Image

Overview

Quantity:	100 µL
Target:	PECI/ECI2 (PECI)
Binding Specificity:	Middle Region
Reactivity:	Human, Rat
Host:	Rabbit
Clonality:	Polyclonal
Conjugate:	This PECI/ECI2 antibody is un-conjugated
Application:	Western Blotting (WB)

Product Details

Immunogen:	PECI antibody was raised using the middle region of PECI corresponding to a region with amino acids AVGISVTLLGLFDAVYASDRATFHTPFHSHLGQSPEGCSSYTFPKIMSPAK
Specificity:	PECI antibody was raised against the middle region of PECI
Purification:	Affinity purified

Target Details

Target:	PECI/ECI2 (PECI)
Alternative Name:	PECI (PECI Products)
Background:	PECI is an auxiliary enzyme that catalyzes an isomerization step required for the beta-oxidation of unsaturated fatty acids.

Target Details

Molecular Weight: 40 kDa (MW of target protein)

Application Details

Application Notes: WB: 1 µg/mL
Optimal conditions should be determined by the investigator.

Comment: PECl Blocking Peptide, catalog no. 33R-1595, is also available for use as a blocking control in assays to test for specificity of this PECl antibody

Restrictions: For Research Use only

Handling

Format: Lyophilized

Reconstitution: Lyophilized powder. Add distilled water for a 1 mg/mL concentration of PECl antibody in PBS

Concentration: Lot specific

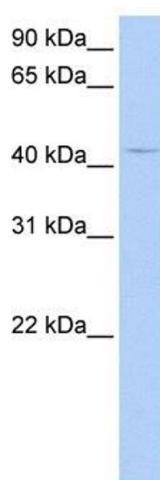
Buffer: PBS

Handling Advice: Avoid repeated freeze/thaw cycles.
Dilute only prior to immediate use.

Storage: 4 °C/-20 °C

Storage Comment: Store at 2-8 °C for short periods. For longer periods of storage, store at -20 °C.

Images



Western Blotting

Image 1. PECl antibody used at 1 ug/ml to detect target protein.