

Datasheet for ABIN630884
anti-MYL6 antibody (N-Term)



[Go to Product page](#)

3 Images

Overview

Quantity:	100 µL
Target:	MYL6
Binding Specificity:	N-Term
Reactivity:	Human, Mouse, Rat
Host:	Rabbit
Clonality:	Polyclonal
Conjugate:	This MYL6 antibody is un-conjugated
Application:	Western Blotting (WB)

Product Details

Immunogen:	MYL6 antibody was raised using the N terminal of MYL6 corresponding to a region with amino acids CDFTEDQTAEFKEAFQLFDRTGDGKILYSQCGDVMRALGQNPTNAEVLKV
Specificity:	MYL6 antibody was raised against the N terminal of MYL6
Purification:	Affinity purified

Target Details

Target:	MYL6
Alternative Name:	MYL6 (MYL6 Products)
Background:	MYL6 contains 3 EF-hand domains. It is the regulatory light chain of myosin. MYL6 does not bind calcium. Myosin is a hexameric ATPase cellular motor protein. It is composed of two heavy chains, two nonphosphorylatable alkali light chains, and two phosphorylatable regulatory

Target Details

light chains. This gene encodes a myosin alkali light chain that is expressed in smooth muscle and non-muscle tissues. Genomic sequences representing several pseudogenes have been described and two transcript variants encoding different isoforms have been identified for this gene.

Molecular Weight: 17 kDa (MW of target protein)

Application Details

Application Notes: WB: 1 µg/mL
Optimal conditions should be determined by the investigator.

Comment: MYL6 Blocking Peptide, catalog no. 33R-1660, is also available for use as a blocking control in assays to test for specificity of this MYL6 antibody

Restrictions: For Research Use only

Handling

Format: Lyophilized

Reconstitution: Lyophilized powder. Add distilled water for a 1 mg/mL concentration of MYL6 antibody in PBS

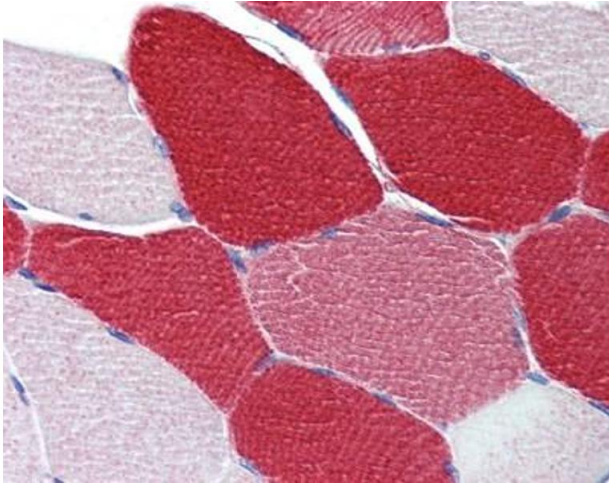
Concentration: Lot specific

Buffer: PBS

Handling Advice: Avoid repeated freeze/thaw cycles.
Dilute only prior to immediate use.

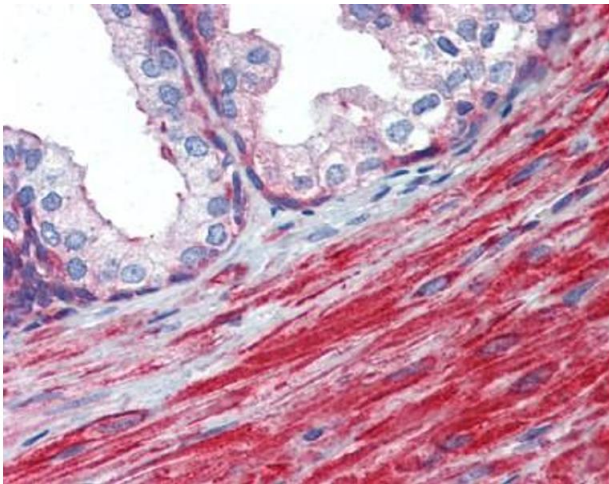
Storage: 4 °C/-20 °C

Storage Comment: Store at 2-8 °C for short periods. For longer periods of storage, store at -20 °C.



Immunohistochemistry

Image 1. MYL6 antibody was used for immunohistochemistry at a concentration of 4-8 ug/ml. Magnification is at 400X



Immunohistochemistry

Image 2. MYL6 antibody was used for immunohistochemistry at a concentration of 4-8 ug/ml. Magnification is at 400X



Western Blotting

Image 3. MYL6 antibody used at 1 ug/ml to detect target protein.