

Datasheet for ABIN630891
anti-EEF2 antibody (N-Term)



[Go to Product page](#)

2 Images

Overview

Quantity:	100 µL
Target:	EEF2
Binding Specificity:	N-Term
Reactivity:	Human, Mouse, Rat, Drosophila melanogaster, C. elegans
Host:	Rabbit
Clonality:	Polyclonal
Conjugate:	This EEF2 antibody is un-conjugated
Application:	Western Blotting (WB)

Product Details

Immunogen:	EEF2 antibody was raised using the N terminal of EEF2 corresponding to a region with amino acids TDSLVCAGIIASARAGETRFTDTRKDEQERCITIKSTAISLFYELSEND
Specificity:	EEF2 antibody was raised against the N terminal of EEF2
Purification:	Affinity purified

Target Details

Target:	EEF2
Alternative Name:	EEF2 (EEF2 Products)
Background:	EEF2 is a member of the GTP-binding translation elongation factor family. The protein is an essential factor for protein synthesis. It promotes the GTP-dependent translocation of the nascent protein chain from the A-site to the P-site of the ribosome. This protein is completely

Target Details

inactivated by EF-2 kinase phosphorylation.

Molecular Weight: 94 kDa (MW of target protein)

Pathways: [AMPK Signaling](#)

Application Details

Application Notes: WB: 1 µg/mL
Optimal conditions should be determined by the investigator.

Comment: EEF2 Blocking Peptide, catalog no. 33R-9020, is also available for use as a blocking control in assays to test for specificity of this EEF2 antibody

Restrictions: For Research Use only

Handling

Format: Lyophilized

Reconstitution: Lyophilized powder. Add distilled water for a 1 mg/mL concentration of EEF2 antibody in PBS

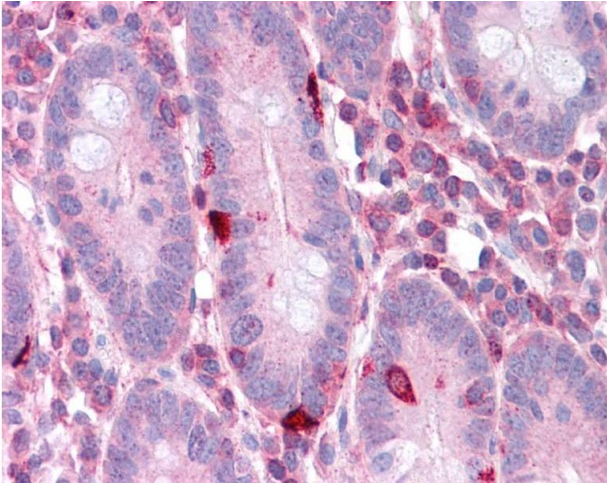
Concentration: Lot specific

Buffer: PBS

Handling Advice: Avoid repeated freeze/thaw cycles.
Dilute only prior to immediate use.

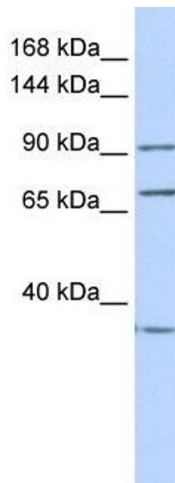
Storage: 4 °C/-20 °C

Storage Comment: Store at 2-8 °C for short periods. For longer periods of storage, store at -20 °C.



Immunohistochemistry

Image 1. EEf2 antibody was used for immunohistochemistry at a concentration of 4-8 ug/ml. Magnification is at 400X



Western Blotting

Image 2. EEf2 antibody used at 1 ug/ml to detect target protein.