

Datasheet for ABIN630902
anti-CLECL1 antibody (Middle Region)



[Go to Product page](#)

1 Image

Overview

Quantity:	100 µL
Target:	CLECL1
Binding Specificity:	Middle Region
Reactivity:	Human
Host:	Rabbit
Clonality:	Polyclonal
Conjugate:	This CLECL1 antibody is un-conjugated
Application:	Western Blotting (WB)

Product Details

Immunogen:	CLECL1 antibody was raised using the middle region of CLECL1 corresponding to a region with amino acids FSLFLICAMAGDVVYADIKTVRTSPLELAFPLQRSVSFNFSTVHKSCPAK
Specificity:	CLECL1 antibody was raised against the middle region of CLECL1
Purification:	Affinity purified

Target Details

Target:	CLECL1
Alternative Name:	CLECL1 (CLECL1 Products)
Background:	DCAL1 is a type II transmembrane, C-type lectin-like protein expressed on dendritic cells (DCs) and B cells. It interacts with subsets of T cells as a costimulatory molecule that enhances interleukin-4 production. DCAL1 is a type II transmembrane, C-type lectin-like protein expressed

Target Details

on dendritic cells (DCs) and B cells.

Molecular Weight: 19 kDa (MW of target protein)

Application Details

Application Notes: WB: 1 µg/mL
Optimal conditions should be determined by the investigator.

Comment: CLECL1 Blocking Peptide, catalog no. 33R-3069, is also available for use as a blocking control in assays to test for specificity of this CLECL1 antibody

Restrictions: For Research Use only

Handling

Format: Lyophilized

Reconstitution: Lyophilized powder. Add distilled water for a 1 mg/mL concentration of CLECL1 antibody in PBS

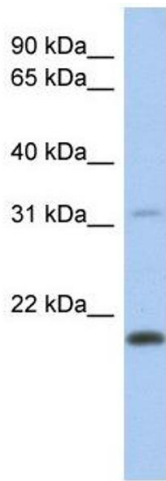
Concentration: Lot specific

Buffer: PBS

Handling Advice: Avoid repeated freeze/thaw cycles.
Dilute only prior to immediate use.

Storage: 4 °C/-20 °C

Storage Comment: Store at 2-8 °C for short periods. For longer periods of storage, store at -20 °C.



Western Blotting

Image 1. CLECL1 antibody used at 1 ug/ml to detect target protein.