

Datasheet for ABIN630909
anti-Transglutaminase 7 antibody (C-Term)



[Go to Product page](#)

1 Image

Overview

Quantity:	100 µL
Target:	Transglutaminase 7 (TGM7)
Binding Specificity:	C-Term
Reactivity:	Human
Host:	Rabbit
Clonality:	Polyclonal
Conjugate:	This Transglutaminase 7 antibody is un-conjugated
Application:	Western Blotting (WB)

Product Details

Immunogen:	Transglutaminase 7 antibody was raised using the C terminal of TGM7 corresponding to a region with amino acids TQKPFWRHTVRMNLDFGKETQWPLLLPYSNYRNKLTDEKLIRVSGIAEVE
Specificity:	Transglutaminase 7 antibody was raised against the C terminal of TGM7
Purification:	Affinity purified

Target Details

Target:	Transglutaminase 7 (TGM7)
Alternative Name:	Transglutaminase 7 (TGM7 Products)
Background:	Transglutaminases (TGM, EC 2.3.2.13) are a family of structurally and functionally related enzymes that stabilize protein assemblies through the formation of gamma-glutamyl-epsilon-lysine crosslinks. Transglutaminases (TGM, EC 2.3.2.13) are a family of structurally and

Target Details

functionally related enzymes that stabilize protein assemblies through the formation of gamma-glutamyl-epsilon lysine crosslinks.

Molecular Weight: 80 kDa (MW of target protein)

Application Details

Application Notes: WB: 1 µg/mL
Optimal conditions should be determined by the investigator.

Comment: Transglutaminase 7 Blocking Peptide, catalog no. 33R-9245, is also available for use as a blocking control in assays to test for specificity of this Transglutaminase 7 antibody

Restrictions: For Research Use only

Handling

Format: Lyophilized

Reconstitution: Lyophilized powder. Add distilled water for a 1 mg/mL concentration of TGM7 antibody in PBS

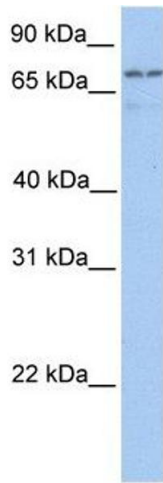
Concentration: Lot specific

Buffer: PBS

Handling Advice: Avoid repeated freeze/thaw cycles.
Dilute only prior to immediate use.

Storage: 4 °C/-20 °C

Storage Comment: Store at 2-8 °C for short periods. For longer periods of storage, store at -20 °C.



Western Blotting

Image 1. Transglutaminase 7 antibody used at 1 ug/ml to detect target protein.